



# **DOCUMENT 716023**

**Data Exchange By Internet**

**DESCRIPTION OF PROCEDURES FOR DATA EXCHANGE  
BETWEEN THE  
CENTRAL ROUTE CHARGES OFFICE  
AND THE  
NATIONAL DATA TRANSMISSION CENTRES**

## RECORD OF AMENDMENTS

Amendment N°	Date	Page Number	Entered by	Subject
1	1/10/2004	4; 6 and 27	Vincent Otero	Inclusion of automated option
2	1/3/2005	28-55	Vincent Otero	Inclusion of Annex F1 till G10
3	12/05/05	35-39	Annie Rubio	Inclusion of Annex H, Modification of Annex I
4	6/6/05	50	Vincent Otero	Annex H-1 Code 11 message format R suppression of "OR flight Id"
5	15/10/05	1 to 8; Annex E ; Annex J ; Annex K.	Vincent Otero	Automated solution: replacement of HTTPS protocol by WebDAV protocol
6	15/5/06	6	Vincent Otero	Correction of website name for test purpose
7	18/12/06	21	Annie Rubio	From Position 36 to Position 36 Length 1 - <i>Claim decision proposed by DTC</i> <i>One Letter code (instead of two-digit</i> <i>code)</i>
8	23/5/07	15-16  8	Vincent Otero	- Format 31 : inclusion of ICAO 24-bit Aircraft Address (record length and additional fields)  - New U.R.L. for DRS backup site
New version 19 <sup>th</sup>	09/01/08	7; Annex I Annexes F and G	Vincent Otero	- Suppression reference to X25  - Integration of Poland and Lithuania  - Introduction of new exemption codes 'H' Humanitarian and 'P' Police and Custom
19.1	07/05/08	Annex F7, Annex F8, Annex G7, Annexe G8	Vincent Otero	- Update of comments in relation to exemption codes.

## CONTENTS

<b><u>CHAPTER 1. INTRODUCTION</u></b>	<b><u>2</u></b>
1. Purpose of the document .....	2
2. Structure of the document .....	2
3. Amendments .....	2
4. Related documents .....	2
<b><u>CHAPTER 2. ORGANISATION OF THE CRCO</u></b>	<b><u>3</u></b>
<b><u>CHAPTER 3. TRANSMISSION OF DATA</u></b>	<b><u>4</u></b>
1. Principles.....	4
2. Constraints .....	4
3. Security .....	4
4. Client certificate.....	5
5. DEBI solutions.....	5
a. Browser Option .....	5
b. Automated Option.....	5
6. Filename convention .....	6
7. File structure .....	7
8. Fallback procedure.....	7
9. Disaster Recovery Site at Hasselt.....	8
<b><u>CHAPTER 4. FLIGHT MESSAGE FILE</u></b>	<b><u>9</u></b>
<b><u>CHAPTER 5. CLA REPLY FILE</u></b>	<b><u>11</u></b>
<b><u>CHAPTER 6. COR REQUEST FILE</u></b>	<b><u>12</u></b>
<b><u>CHAPTER 7. CLA REQUEST FILE</u></b>	<b><u>13</u></b>
ANNEX A. Flight Message formats .....	14
ANNEX B. CLA reply message formats .....	20
ANNEX C. COR Request message format .....	24
ANNEX D. CLA Request message format .....	25
ANNEX E. Installation of client certificate in Internet Explorer.....	27
ANNEX F. CLA request rules .....	29
ANNEX G. CLA reply rules.....	40
ANNEX H. CLA(im) replies – action required by RCOs.....	51
ANNEX I. DTC Identification codes .....	55
ANNEX J. Browser option: detailed functions .....	56
ANNEX K. Automated option: detailed functions.....	61

## **CHAPTER 1. INTRODUCTION**

### **1. Purpose of the document**

This document defines the procedures and formats for the exchange of data, in both directions, between the national Data Transmission Centres (DTC) and the Central Route Charge Office (CRCO). The exchanged data are the following:

- From DTC to C.R.C.O.
  - flight messages and replies to correction of flight messages
  - replies to claim requests
- From CRCO to DTC
  - correction requests
  - claim requests

### **2. Structure of the document**

This document has been structured into two parts:

1. General definition and description of the data transmission procedures
2. Detailed message formats, codes and examples presented in annexes A to K.

### **3. Amendments**

All modifications, additions, or other pertinent comments should be notified to the CRCO (Unit R2), which will produce amendments to this document as appropriate. An amendment will consist of sections in which changes have taken place; i.e. a Chapter or an Annex, and a revised list of contents if required.

### **4. Related documents**

- 716028 -Exchange of data between the National Administrations and the Central Route Charges Office
- OMD – CRCO Operational and Management Data

## **CHAPTER 2.**

### **ORGANISATION OF THE CRCO**

1. The CRCO Directorate is organized in the following units:

Unit R1:	System & Business Development
Unit R2:	IT Support and General Services
Unit R3:	Billing and Customer Relations
Unit R4:	Collection of Charges
Unit R5:	Accounting and Treasury

2. Transmissions of data are under the responsibility of unit R2.

2.1. For general matters please contact:

Philippe Varloud  
Head of Unit R2 : IT support and General Services  
Tel. : (32.2) 729.38.20  
Fax. : (32.2) 729.90.92  
e-mail : [philippe.varloud@eurocontrol.int](mailto:philippe.varloud@eurocontrol.int)

2.2 In case of any difficulty during the transmission, please contact :

I.T. Customers Services  
Tel : (32.2) 729.38.36  
Fax. : (32.2) 729.90.92  
e-mail : [crco.customer.services@eurocontrol.int](mailto:crco.customer.services@eurocontrol.int)

## **CHAPTER 3.**

### **TRANSMISSION OF DATA**

#### **1. Principles**

The transmission of data between DTC and CRCO is an internet-based application. This application, called DEBI for **D**ata **E**xchange **B**y **I**nternet, proposes two different options for the transmission:

- Browser option based on HTTPs protocol
- Automated option based on WebDAV protocol

The data exchanged in both directions are ASCII text files, complying with predefined formats.

#### **2. Constraints**

The transmission of information is always initiated by the DTC. The DEBI system uses HTTPs or WebDAV protocol. The data transfer is secured through encryption and also by the use of digital certificates on the client and server side.

The following timing constraints must be considered:

- The CRCO application has a time-out of approximately 5 minutes, i.e. if no information is exchanged during that period the connection is closed.
- Transmission facilities are available 7 days per week and 22 hours per day with an interruption between 20H00 and 22H00 Brussels Time.

Unit R2 will inform DTC's in advance of periods of non-availability due to maintenance of platform or for any other reason.

#### **3. Security**

The data exchanged between DTC and CRCO use the Secure Socket Layer (SSL) technology. SSL is the standard security technology for managing the encrypted link between a web server and a client. This link ensures that all data passed between the web server and the client remains encrypted, private and integral.

To increase the level of security during the transmission, the DTC must have a client certificate installed. This client certificate contains information allowing the CRCO to identify the user who wants to connect.

Additional security is ensured by a password used during the transmission. This password can be changed by the DTC and must have minimum 6 characters and maximum 12 characters.

The same level of security is applied in the two proposed solutions (browser and automated).

#### **4. Client certificate**

The DTC obtains a client certificate from a Certification Authority. For the DEBI application, EUROCONTROL will act as the Certification Authority. The DTC will receive a client certificate and a password from the CRCO.

This client certificate must be installed only ONCE for the two solutions (browser and automated solution) on the PC or server from which you want to make the transmission. The password received must be entered during the installation of the client certificate.

A complete presentation of installation is given in **Annex E**. 'Installation of client certificate in Internet Explorer'

#### **5. DEBI solutions**

Two options are possible in the DEBI system, the 'browser' option and the 'automated' option.

##### **a. Browser Option**

From the DTC point of view, the browser option, based on HTTPs protocol, is the easiest to implement. The DTC needs only an Internet provider and a browser. The Browser option is not a fully automated system but more a human controlled system. The functions are:

- Logon page
- Consult a home page
- Send DTC files (message and reply CLA)
- Receive COR/CLA files from CRCO
- Change of password
- Consult last 30 days of log files
- Consult Frequently Asked questions

In the DEBI application – option Browser - , the URL (Uniform Resource Locator) to be used is <https://debi.crco.eurocontrol.int>.

A complete presentation of functions is described in the **Annex J**. "Browser option : detailed functions"

##### **b. Automated Option**

From the DTC point of view, the automated option, based on WebDAV protocol, allows a full-computerized solution without any human intervention. The DTC needs an Internet provider and a WebDAV software tool.

The protocol WebDAV is an extension of the HTTP protocol. This protocol is an industry-standard set of extensions to HTTP 1.1. A complete documentation is available at <http://www.webdav.org>, or at <http://asg.web.cmu.edu/rfc/rfc2518.html> - RFC2518).

WebDAV will be used to download and upload files from CRCO web-server using the extensions of the standard HTTPs protocol. All of the standard access-restrictions of the web-server proposed in browser option are used in conjunction with WebDAV. It enables the same strong authentication, encryption, proxy support, and caching capabilities as any other HTTP-based Web site.

In the DEBI application – option automated- , the **URL** (Uniform Resource Locator) to be used

- for production purpose is [https://debi.crco.eurocontrol.int/<dtc\\_code>](https://debi.crco.eurocontrol.int/<dtc_code>). For example : <https://debi.crco.eurocontrol.int/LF> for DTC France.
- for test purpose is [https://debi.crco.eurocontrol.int/<dtc\\_code\\_test>](https://debi.crco.eurocontrol.int/<dtc_code_test>) . For example : [https://debi.crco.eurocontrol.int/LF\\_test](https://debi.crco.eurocontrol.int/LF_test) for DTC France.

A complete presentation of functions is described in the **Annex K**. “Automated option : detailed functions”.

## **6. Filename convention**

For the DEBI application, the following filename convention is to be followed :

- From DTC To CRCO

- Flight messages and corrections M-XX-YYYYMMDD-HHMMSS-SSS.TXT
- Replies to claim requests A-XX-YYYYMMDD-HHMMSS-SSS.TXT

- From CRCO to DTC

- Correction requests R-XX-YYYYMMDD-HHMMSS-SSS.TXT
- Claim requests C-XX-YYYYMMDD-HHMMSS-SSS.TXT

Where **XX** represents the DTC code, **YYYYMMDD-HHMMSS** represents the date and time of the file creation. **SSS** is a sequence number. The date, creation time and sequence number are not significant (i.e. no automatic processing or check is based on these items), only the format should be correct.

Two examples of valid files are:

**M-LE-20040425-1025-001.txt**

file with messages and/or corrections from DTC Spain created on 25/04/20004.

**M-EB-00000120-0001-001.txt**

file with messages and/or corrections from DTC Belgium.

For the browser option, the CRCO recommends the above naming convention; nevertheless, any filename will be accepted because filenames will be automatically changed in the CRCO web server.

For the automated option, this naming convention is mandatory. (See **Annex K** for more detail about Automated Option)

For the files sent from CRCO to DTCs, the above naming convention will be applied for all DTCs.



## **7. File structure**

The data exchanged must be in the form of a DOS ASCII text file complying with the existing formats. A line of data is defined as a string of characters ending with EOL (CR/LF). There must be one message per line. Several batches can be present in one file. The maximum length of a message depends on the type of message and is specified for each format. The maximum number of lines per file is 9999.

Several types of messages have to be considered. Each type of message has a different format referenced by a number and explained in annexes A through D.

Two different types of files are sent from DTC to CRCO :

Flight messages and COR replies cf chapter 4.

Replies to claim requests cf chapter 5.

Two different types of files are sent from CRCO to DTC :

COR requests cf chapter 6.

CLA requests cf chapter 7.

## **8. Fallback procedure**

At the 7th meeting of the Transmission Centres Workshop, it was agreed that a "Fall-back" system is required for data transmission in the event of a persistent communications breakdown. As a result of tests on a Centre by Centre basis, it was established that each DTC was in a position to send data on diskette or via e-mail to the CRCO.

The standard solution is the following:

Dos (FAT) compatible 3.5" diskette with the same file structure (format and naming) as in normal operation.

When a transmission centre experiences a breakdown in data communications which is likely to persist, or has a prior warning of a rupture of these communications, it should contact the CRCO immediately to coordinate the provision of data via the fallback solution.

In the event of a persistent breakdown affecting the CRCO itself, the DTCs will be contacted immediately in order to make emergency arrangements based on the transfer of data via DOS (FAT) compatible 3.5" diskette or e-mail.

Every effort must be made to come back to the normal procedure as early as possible.

## **9. Disaster Recovery Site at Hasselt**

In the event of a major breakdown affecting the CRCO infrastructure, the CRCO operations can be resumed in a Disaster Recovery Site located at Hasselt in Belgium. The CRCO will try to make the solution as clear and transparent as possible and inform all DTCs on due time. In order to reroute the transmission, DTCs must be able to transmit information on the following URL :

<https://debi.eurocontrol.cegeka.be> (browser option) or

[https://debi.eurocontrol.cegeka.be /DTC\\_code](https://debi.eurocontrol.cegeka.be/DTC_code) (automated option)

This back-up facility is tested several times a year and DTCs are invited to participate from time to time in these tests.

## CHAPTER 4.

### FLIGHT MESSAGE FILE

The flight message file contains data on the initial flight messages and the correction of messages already transmitted

Several batches may be transmitted in one file. A batch is a group of flight messages for a given day.

In one file, there must be only one batch for a given date of flight.

A batch consists of the following messages:

- one batch header message (format 10)
- one or more flight messages (format 31,34 or 36)
- one end-of-batch message (format 20)

○ **Batch header (format 10) :**

The batch header enables the CRCO to determine the originating RCO, the date of flight and the occurrence of multiple transmissions for a given date.

In the batch header, there is a batch designator code to qualify the transmission. The value of this code is either :

NOR : this batch is the first transmission for the specified date of flight.

ADD : a batch has already been transmitted for the specified date of flight.

BKP : the flights sent under this header are only for information, and are not for billing. They are only sent after special agreement with the CRCO (BKP batches cannot be mixed with other batch types in a single transmission session).

○ **At least one flight message (format 31, 34 or 36).**

The different type of flight messages are:

- Introduction and correction of a flight message (format 31)
- Cancellation message (format 34) :
- Supplementary information message (format 36)

These messages provide all details, which are required to introduce a new flight to be billed, correct a flight already introduced in a previous transmission session or cancel a flight already introduced

In the flight message, there is an introduction/correction code to qualify the type of messages. The values of this code are:

F : introduction of a new message

M : reply to a correction request

C : cancellation of a message

I : supplementary information message

○ **End of batch header (format 20) :**

The end of batch message enables the CRCO to record the end of a batch, to check the batch header and to check the number of messages in a batch

The possible combinations of codes are the following:

<b>Batch designator</b>	<b>Format</b>	<b>Message code</b>	<b>Comment</b>
NOR	31	F	Creation of a flight message
	34	C	Cancellation of a flight message
ADD	31	F	Creation of a flight message for a date of flight already transmitted.
	31	M	Reply to a correction
	34	C	Cancellation of a flight
	36	I	Supplementary information for a flight already transmitted for the specified date of flight.
BKP	31	F	Not billed message BKP message designator cannot be mixed with other message designator

A complete description of the different formats used is given in **Annex A**.

## CHAPTER 5.

### CLA REPLY FILE

The CLA reply file enables the DTC to send decisions and supporting confirmation or correcting message elements and/or remarks in respect of flights which have been billed, but which were claimed by the user. The CLA reply message is an 'answer' to a CLA request message (format 42) generated by CRCO.

Several batches may be transmitted in one file. A batch is a group of messages for a given claim number, i.e. the reference attributed by the CRCO to a user claim.

A batch consists of minimum three messages:

- one batch header message (format 11)
- one or more CLA reply messages (format 50)
- one end-of-batch message (format 21)

○ **Batch header (format 11) :**

The header for CLA replies enables the CRCO to determine the originating DTC and the related user claim number.

○ **CLA message (format 50).**

This type of message enables the CRCO to handle the user claim for a given flight. The treatment is automated, answers from several DTC's is most of the time needed to settle one given user claim

○ **End of batch header (format 21):**

This end of batch message enables CRCO to record the end of a batch, to check the batch header and to check the number of messages in a batch

A complete description of the different formats used is given in **Annex B**.

Further detailed procedures and explanations in the context of CLA handling can be found in document 716028.

## **CHAPTER 6.**

### **COR REQUEST FILE**

Requests for message correction (or confirmation), known as “COR requests” are produced by the CRCO every week.

A COR request file consist of :

- one or more COR messages (format 41).

A complete description of the format 41 can be found in **Annex C**.

COR request files are created once a week as needed (normally during the night from Tuesday to Wednesday)

Further detailed procedures and explanations in the context of COR handling can be found in document 716028.

## **CHAPTER 7.**

### **CLA REQUEST FILE**

The CLA request message enables the CRCO to ask the DTC to take a decision on a claim received from a user for a given flights

A CLA request file consist of :

- one or more CLA message (format 50).

A complete description of format 50 can be found in **Annex D**.

CLA request files are created every working day as needed.

Further detailed procedures and explanations in the context of CLA handling can be found in document 716028.

**ANNEX A. Flight Message formats**

<b><u>BATCH HEADER FOR FLIGHT MESSAGES</u></b>			<b>FORMAT : 10</b>
TRANSMISSION FROM THE DTC TO CRCO			
LENGTH      MIN= 16      MAX=46			
POSITION		LENGTH	FIELD
FROM	TO		
1	1	1	"("
2	3	2	RCO collector code. Two letter code. This code is the same as the DTC identification code (cf annex I); but if there is more than one RCO for one DTC then specific codes must be attributed to these RCO's. Only exceptions are listed here :  GC      = SPAIN (Canary Islands) AZ      = PORTUGAL (Santa Maria FIR) PX      = UNITED KINGDOM (Prestwick) TX      = UNITED KINGDOM (West Drayton) SG      = SWITZERLAND (Geneva) SZ      = SWITZERLAND (Zurich)
4	6	3	Batch number. Day of the year corresponding to the date of flight (e.g. : the batch number for the flights which have taken place on the 12/02/99 is 043).
7	12	6	Date of flight (DDMMYY).
13	15	3	Normal/additional designator. Possible values : <ul style="list-style-type: none"> <li>• "NOR" : this batch is the first transmission for the specified date of flight. Batches of this kind can contain only the following messages : F/C</li> <li>• "ADD" : a batch has already been transmitted for the specified date of flight. Batches of this kind may contain the following messages : F/C/M/I</li> <li>• "BKP" : the flights sent under this header are only for information, and are not for billing. BKP batches cannot be mixed with other batch types in a single transmission session.</li> </ul>
16	16	1	"."
17	46	30	* Comment

\* This field is optional



**FLIGHT MESSAGE (INTRODUCTION AND CORRECTION)****FORMAT : 31****TRANSMISSION FROM THE DTC TO CRCO****LENGTH**                      **MIN= 37**      **MAX=205**

POSITION		LENGTH	FIELD
FROM	TO		
1	4	4	Sequence number. Four-digit number from 0001 to 9999. This number represents the identification of a flight for a given date(unique for one date for one RCO collector code). The following rules apply to the sequence numbers : in an initial batch ("NOR" in the batch header) the sequence number starts at 0001 and grows continuously (without "holes"). In a subsequent batch ("ADD" in the batch header), the numbering of additional flight messages <u>must</u> resume with the sequence number following the last sequence number used in the last batch for that date and RCO collector code. Sequence numbers of correction messages coded M must correspond to the original message which they are supposed to correct
5	5	1	Introduction/correction code : <ul style="list-style-type: none"> <li>• "F": this is the introduction of a new message (this type can exist in "NOR", "ADD" and "BKP" batches)</li> <li>• "M": this is the reply to a correction request (this type can exist only in "ADD" batches)</li> </ul>
6	9	4	Time of departure/entry. A four-figure group indicating the hour and minute of the : <ul style="list-style-type: none"> <li>• ATD (Actual Time of Departure) in the case of departure within the RCO's area of responsibility</li> <li>• Entry time in the case of traffic entering the RCO's area of responsibility from outside the CRCO area. All times are expressed in UTC.</li> </ul>
10	13	4	Aerodrome of departure. ICAO Location indicator (4 letters) as published in Doc.7910.
14	17	4	Aerodrome of arrival. ICAO Location indicator (4 letters) as published in Doc.7910.
18	26	9	Flight identification. Maximum of 9 characters which may represent the following identification types : <ul style="list-style-type: none"> <li>• An aircraft registration.</li> <li>• A flight number. The field is considered as a flight-number if the first three characters are alphabetic and if the fourth character is numeric</li> <li>• A compound flight number. Then the field has the following format : AAABBB999 where BBB999 is the normal flight number, and AAA a company ICAO designator different from BBB. The flight will be attributed to AAA, but BBB999 appears on the pro-forma (e.g. where a flight is operated by two companies : "pool" flight)</li> <li>• A military reference : if the "operator" field (see below) contains a numeric code, the "Flight identification" field is considered as a free format military identification.</li> </ul>
27	27	1	Main Exemption code. cf document 716028 for details
28	34	7	Aircraft type. ICAO designator (when assigned) as published in Doc. 8643.
35	37	3	Operator. This field permits the identification of the operator in cases where this is not evident from the flight identification field, as, for example with a military callsign, or where the operator has an ICAO code not used in the flight identification. In practical use, this field will normally contain only a "Z" or the CRCO-assigned 3-digit code assigned to a military user. A list of these numerical codes is contained in Doc. 716028.
38	46	9	* Aircraft registration. Maximum of 9 characters representing the nationality and registration markings of an aircraft
47	67	21	* Comment. Plain text for any additional information. Any comment can be indicated in this 'Comment' field or in new 'Alternate comment' field or in both

68	73	6	<p>* Estimated off block date (DDMMYY). If present the following field must also be present. Date of departure of the flight, taking account of the last message sent by IFPS, (FPL, CHG, DLA, DEP, ARR) in format day (DD), month MM, year (YY)</p> <p>Field "EOBD" as derived from ADEXP format (see list of ADEXP primary fields). Forms an identifier of a flight plan, together with the field "IFPLID".</p> <p>If field IFPLID is not available, leave blank.</p>
74	83	10	<p>* IFPLID. If present the preceding field must also be present A reference to flight plan given by the IFPS system, which is made available by the IFPS system in field "IFPLID". Format : 2 letters, followed by 8 digits.</p> <p>Field "IFPLID" as derived from ADEXP format (see list of ADEXP primary fields). Forms a unique identifier of a flight plan, together with the field "Estimated Off Block Date".</p> <p>If flight plan reference is not available, leave blank.</p>
84	87	4	* Initially planned aerodrome of destination in case of diversion ICAO code of the aerodrome of destination, as initially planned. Used only if the flight has been diverted.
88	89	2	* Charging area overflown. 2 letters code for the CRCO charging area for which this message contains the co-ordinates of the entry and exit points. Used only if the flight crosses a single charging area, and if it is assumed that the CFMU has no flight plan. This data shall only be collected and transmitted after a specific decision has been taken in consultation with the CRCO.
90	104	15	<p>* Entry point coordinates. Co-ordinates of the entry point of the flight in the charging area indicated in this message. Used only if the flight crosses a single charging area, and if it is assumed that the CFMU has no flight plan. These dates should only be collected and transmitted after a specific decision has been taken in consultation with the CRCO.</p> <p><u>Format :</u></p> <p>Latitude, in degrees (dd), minutes (mm), seconds (ss) and direction (N or S) or Longitude, in degrees (ddd), minutes (mm), seconds (ss) and direction (W or E).</p>
105	119	15	<p>* Exit Point coordinates. Co-ordinates of the exit point of the flight in the charging area indicated in this message.</p> <p>Used only if the flight crosses a single charging area, and if it is assumed that the CFMU has no flight plan.</p> <p>These data shall only be collected and transmitted after a specific decision has been taken in consultation with the CRCO.</p> <p>Format : Latitude, in degrees (dd), minutes (mm), seconds (ss) and direction (N or S) OR Longitude, in degrees (ddd), minutes (mm), seconds (ss) and direction (W or E).</p>
120	122	3	<p>* Supplementary Exemption codes.</p> <p>Used to provide supplementary information for exemption processing, when other exemption codes also apply to the flight, but without priority.</p> <p>Format: from 1 to 3 alphabetic characters, each corresponding to a valid exemption code, as defined in doc 716028.</p>
123	123	1	<p>*Source of the ICAO 24-bit Aircraft Address</p> <p>Code identifying the origin of the 24-bit Aircraft address provided</p> <p>1 : ATC</p> <p>2 : Airport</p> <p>3 : Flight plan</p> <p>4 : Other</p> <p>empty if no 24-bit address is provided</p>
124	129	6	<p>* ICAO 24-bit Aircraft Address</p> <p>Unique identification of the aircraft performing the flight.</p> <p>Format : 6 hexadecimal characters (0,1,...,9,A,B,...F)</p>
130	205	76	<p>* Additional Comment. Plain text for any additional information.</p> <p>Any comment can be indicated in this new 'Additional Comment' field or in existing 'Comment' field or in both</p>

\* This field is optional

CANCELLATION MESSAGE**FORMAT : 34**

TRANSMISSION FROM THE DTC TO CRCO

LENGTH                      MIN= 6                      MAX=35

POSITION		LENGTH	FIELD
FROM	TO		
1	4	4	Sequence number. Four-digit number from 0001 to 9999 corresponding to the original message that they are supposed to cancel.
5	5	1	"C"
6	35	30	* Comment. Plain text for any additional information.

\* This field is optional

Note: This format cancels a F message transmitted in this or in a previously sent batch.

**SUPPLEMENTARY INFORMATION MESSAGE****FORMAT : 36**

TRANSMISSION FROM THE DTC TO CRCO

LENGTH MIN= 5 MAX=485

POSITION		LENGTH	FIELD
FROM	TO		
1	4	4	Sequence number. Four-digit number from 0001 to 9999 corresponding to the original message that they are supposed to supplement.
5	5	1	"I"
6	485	480	free text information

Note : This message is the reply to a correction request where the elements of the original message are confirmed and supplementary information is provided so that permanent data can be brought up to date. The free text field is uninterrupted without line breaks or delimiters.

END OF BATCH FOR FLIGHT MESSAGES**FORMAT : 20**

TRANSMISSION FROM THE DTC TO CRCO

LENGTH            MIN= 17    MAX= 47

POSITION		LENGTH	FIELD
FROM	TO		
1	4	4	Count number. The count number is not a sequence number, it is : the total number of messages transmitted in the batch (F + C for the NOR batch or F + C + M + I in the ADD batch) OR 9999 if the total number of messages is not available.
5	7	3	"END"
8	10	3	Batch number. Day of the year corresponding to the date of flight (e.g. : the batch number for the flights which have taken place on the 12/02/96 is 043).
11	16	6	Date of flight (DDMMYY)
17	17	1	". "
18	47	30	* Comment

\* This field is optional

**ANNEX B. CLA reply message formats****BATCH HEADER FOR CLA REPLIES****FORMAT : 11**

TRANSMISSION FROM THE DTC TO CRCO

LENGTH                      MIN= 13      MAX=43

POSITION		LENGTH	FIELD
FROM	TO		
1	1	1	"("
2	3	2	RCO CLA reply originator code. Identification (two letter code) of the RCO which issues a set of CLA replies, in a CLA reply batch header.
4	6	3	reserved
7	12	6	User claim number A unique six-digit number identifying the claim dossier raised for a user claim. It covers a set of claimed flights for one or more months, for which CLA requests and replies are exchanged between the CRCO and the DTC.  This claim number is related to a single claiming user.
13	13	1	"."
14	43	30	* Comment

\* This field is optional

Note : This message is only transmitted in a 'CLA reply transmission session'

**CLA REPLY MESSAGE****FORMAT : 50****TRANSMISSION FROM DTC TO THE CRCO****LENGTH**                      **MIN= 205**      **MAX= 205**

POSITION		LENGTH	FIELD
FROM	TO		
1	1	1	"Z"
			<u>Original RCO message data :</u>
2	7	6	Date of flight (DDMMYY)
			<b><u>CRCO CLA request reference</u></b>
8	13	6	User number
14	19	6	pro forma line number. A sequential reference number for each flight on the pro-forma sent to the user.  This number is unique for a pair user/month of flight.
20	21	2	CLA serial number. CLA sequence number for a claimed flight. Composed of : - a 1 digit CLA sequence number, starting with 1, and incremented by 1 for successive user claims on the same flight. - a 1 digit RCO destination number, equal to 1 for the CLA sent to originating RCO and incremented by 1 for each CLA request sent to additional RCO's for the same user claim on a given flight
22	27	6	user claim number. A unique six-digit number identifying the claim dossier raised for a user claim. It covers a set of claimed flights for one or more months, for which CLA requests and replies are exchanged between the CRCO and the DTC.  This claim number is related to a single claiming user.
28	33	6	CLA reply date (DDMMYY). Date (in format ddmmyy) when CLA reply is transmitted by the replying DTC, in the CLA reply procedure.
34	35	2	Claim reason code proposed by DTC Two-digit code, used in the CLA request/reply procedures, indicating the claim reason (cf. document 716028 for possible values).
36	36	1	claim decision code proposed by DTC One-digit code, used in the CLA request/reply procedures, indicating the claim reason (cf. document 716028 for possible values).
			<u>Correcting message elements :</u>
37	42	6	Date of flight (DDMMYY)
43	46	4	Departure/entry time
47	50	4	Aerodrome of departure
51	54	4	Aerodrome of arrival
55	63	9	Flight identification
64	64	1	Exemption code
65	71	7	Aircraft type
			<b><u>Confirmation elements</u></b> Additional information, outside basic elements of a flight message, related to a claimed flight. Such information is required to confirm a claimed flight. It is provided by the RCO in the CLA reply procedure
72	80	9	Confirmed flight identification
81	89	9	Confirmed aircraft registration
90	95	6	Confirmed ATD (DDHHmm)
96	99	4	Confirmed aerodrome of departure
100	105	6	Confirmed ATA (DDHHmm)
106	109	4	Confirmed aerodrome of arrival
110	115	6	First ATO (DDHHmm)
116	120	5	First route point
121	126	6	Second ATO (DDHHmm)

127	131	5	Second route point. Identification of the second reporting point. This can be a navigational aid (3 characters) or a waypoint (5 characters). Used as confirmation element in the CLA reply procedure.
132	132	1	IFR daylight criterion. Code used to interpret the associated IFR sunrise / sunset time field, in the same message. Used as a confirmation element in the CLA reply procedure. Possible values are : <ol style="list-style-type: none"> <li>1 sunrise at departure aerodrome</li> <li>2 sunset at departure aerodrome</li> <li>3 sunrise at arrival aerodrome</li> <li>4 sunset at arrival aerodrome.</li> </ol>
133	136	4	IFR sunrise / sunset time. Time expressed in UTC (in format hhmm) of sunrise or sunset for departure or arrival, according to the code given in the IFR daylight criterion field, in the same message. Used as a confirmation element in the CLA reply procedure
137	137	1	IFR nature of proof. Code used to interpret the associated IFR source of proof field, in the same message. Used as a confirmation element in the CLA reply procedure. Possible values are: <ol style="list-style-type: none"> <li>1 IFR FPL available</li> <li>2 IFR strip available</li> <li>3 Departure aerodrome log available</li> <li>4 Arrival aerodrome log available</li> <li>5 IFR FPL and strip available</li> <li>6 Radar tracking data available</li> </ol>
138	144	7	IFR source of proof. Indicator to be interpreted, according to the code given in the IFR nature of proof field, in the same message. This can be: <ul style="list-style-type: none"> <li>- a four letter ICAO indicator</li> <li>- a four letter ICAO indicator + a three letter code for the category of centre in charge of the FIR.</li> </ul> used as a confirmation element in the CLA reply procedure.
145	145	1	Exemption rejection code used to indicate why a claim for exemption is rejected by an RCO. Used as a confirmation element in the CLA reply procedure. Possible values are : <ol style="list-style-type: none"> <li>1 No "X" in item 8 of FPL and / or no relevant "RMK" in item 18 of FPL.</li> <li>2 No relevant remark on departure aerodrome log.</li> <li>3 No relevant remark on arrival aerodrome log.</li> <li>4 No relevant remark on IFR strip.</li> </ol>
146	205	60	RCO remark



**END OF BATCH FOR CLA REPLIES****FORMAT : 21**

TRANSMISSION FROM THE DTC TO CRCO

LENGTH                      MIN= 17      MAX=47

POSITION		LENGTH	FIELD
FROM	TO		
1	4	4	Count number. The count number is not a sequence number, it is the total number of messages transmitted in the batch (CLA replies) OR 9999 if the total number of messages is not available
5	7	3	"END"
8	10	3	Reserved
11	16	6	User claim number
17	17	1	". "
18	47	30	*Comment

\* This field is optional

Further detailed explanations about rules used in the context of CLA Replies can be found in Annex G.

Further detailed explanations about codes and rules used in the context of CLA handling can be found in document 716028.

**ANNEX C. COR Request message format****COR REQUEST MESSAGE****FORMAT : 41**

TRANSMISSION FROM THE CRCO TO DTC

LENGTH                      MIN= 74            MAX= 74

POSITION		LENGTH	FIELD
FROM	TO		
1	1	1	"D"
2	3	2	RCO collector code
4	9	6	Date of flight (DDMMYY)
10	13	4	Sequence number
14	17	4	Time of departure/entry
18	21	4	Aerodrome of departure
22	25	4	Aerodrome of arrival
26	34	9	Flight identification
35	35	1	Exemption code
36	42	7	Aircraft type
43	44	2	Correction request code
45	74	30	* Comment

\* This field is optional

**ANNEX D. CLA Request message format****CLA REQUEST MESSAGE****FORMAT : 42**

TRANSMISSION FROM THE CRCO TO DTC

LENGTH MIN= 256 MAX= 256

POSITION		LENGTH	FIELD
FROM	TO		
1	1	1	"C"
2	3	2	Destination RCO <u>Original RCO message data</u>
4	9	6	Date of flight (DDMMYY)
10	13	4	Sequence number (= 9999 if destination RCO differs from originator RCO).
14	17	4	Time of departure/entry
18	21	4	Aerodrome of departure
22	25	4	Aerodrome of arrival
26	34	9	Flight identification
35	35	1	Exemption code
36	42	7	Aircraft type  <u>User Claim</u>
43	44	2	Claim reason code
45	50	6	User number
51	56	6	Pro forma line number
57	58	2	CLA serial number
59	64	6	User claim number
65	70	6	CLA request date
71	77	7	Net charge billed
			<u>Correcting message elements :</u>
78	83	6	Date of flight (DDMMYY)
84	87	4	Time of departure/entry
88	91	4	Aerodrome of departure
92	95	4	Aerodrome of arrival
96	104	9	Flight identification
105	105	1	Exemption code
106	112	7	Aircraft type
			<u>Additional elements :</u>
113	121	9	Aircraft registration
122	127	6	ATD (DDHHmm)
128	133	6	ATA (DDHHmm)
134	153	20	Instructor name
154	155	2	Number of passengers on board
			<u>Duplicate RCO message reference :</u>

156	157	2	RCO collector code
158	163	6	Date of flight (DDMMYY)
164	167	4	Sequence number
168	171	4	Time of departure/entry
172	175	4	Aerodrome of departure
176	179	4	Aerodrome of arrival
180	188	9	Flight identification
189	189	1	Exemption code
190	196	7	Aircraft type
197	256	60	<u>CRCO remark</u>

Further detailed explanations about rules used in the context of CLA Request can be found in Annex F.

Further detailed explanations about codes used in the context of CLA handling can be found in document 716028.

## **ANNEX E. Installation of client certificate in Internet Explorer**

The client certificate must be installed only ONCE for the two solutions (browser and automated solution) on the PC or server from which you want to make the transmission. The password received from CRCO must be entered during the installation of the client certificate.

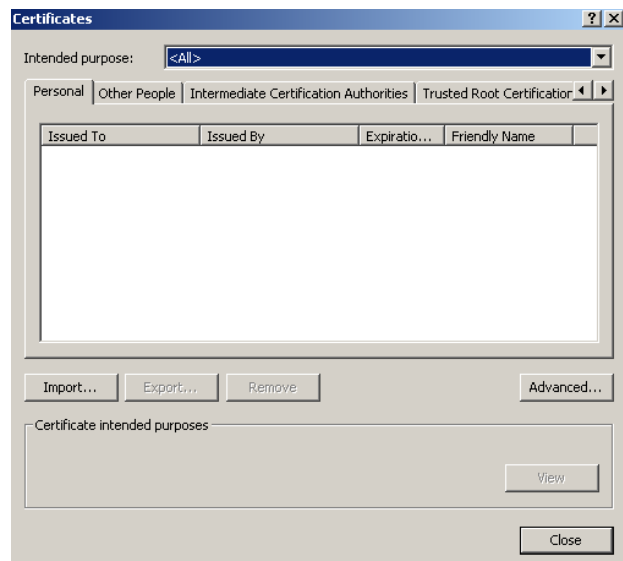
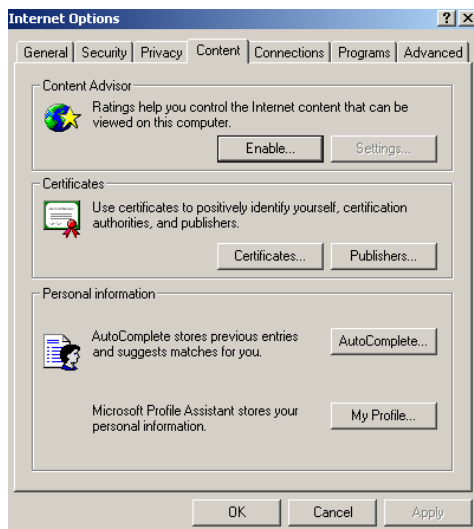
This installation is given as an example and allows the use of the browser option with Internet explorer and the function webfolder (webDAV protocol) in Internet explorer. Obviously, if the DTC uses another browser than Internet Explorer or wants to use the automated solution, the DTC must find the way to install it.

For the Browser option, the DTC will receive a *.PFX* file like EUROCONTROL-CRCO-DEBI-ED-TEST-2005.pfx (test environment for German DTC) and the file EUROCONTROL-CRCO-DEBI-ED-2005.pfx (production environment for German DTC).

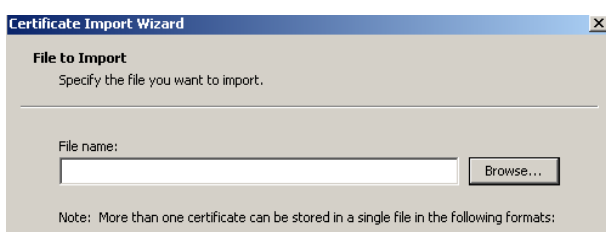
For the automated option, in addition to the PFX file, the DTC will receive a *CRT*, *.CER*, *.PEM* and *.KEY* files. These files are the same client certificate than the *PFX* file.

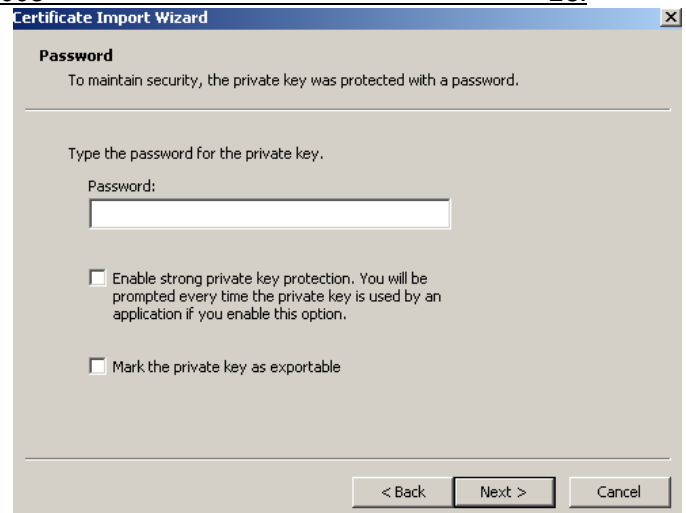
### **A. Installation of client certificate on Internet explorer**

- Launch Internet Explorer, option Tools | Internet Options | Content tab
- Click on certificate
- Click on import

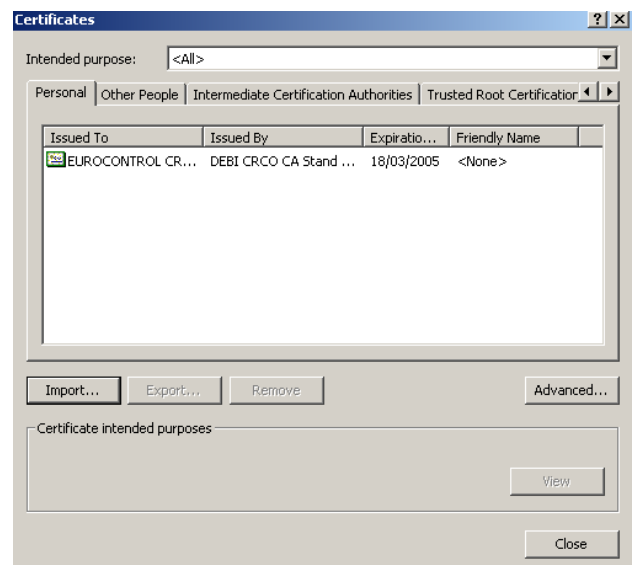


- Click on browse and choose the PFX file received
- Enter the password for installation received from the CRCO
- Click on next



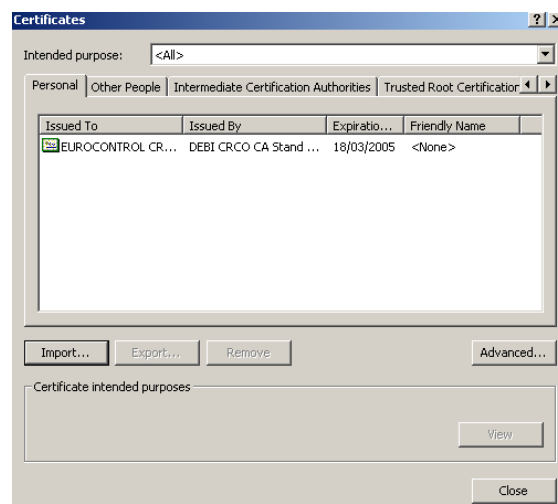


- Click on next
- Click on Finish. The Client certificate is now installed in the personal Tab
- The client certificate can be installed more than once.



## B. Deletion of client certificate on Internet Explorer

- Launch Internet Explorer, option Tools | Internet Options | Content tab
- Click certificate
- Click on personal tab
- Choose the certificate and click on remove



## **ANNEX F. CLA request rules**

CLA (CLAIM) REQUEST MESSAGE - EXTENDED FORMAT					Situation: 17-11-93	Printed: 8-01-08	Annex F1	
Transmission from CRCO to DTC								
Format		42						
Length		256 Characters						
Field Nr.	Field Length	Position		FIELD NAME	CLAIM REASON CODE			
		From	To		10			
					Cancelled flight			
					obl.	opt.	forb.	
1	1	1	1	Type of message ("C" = CLA(im) message from CRCO)	X			
2	2	2	3	Destination RCO	X			
3	6	4	9	Date of flight as billed to user (DDMMYY)	X			
4	4	10	13	Sequence number of message originator	X			
5	4	14	17	Departure/entry time (HHmm)	X			
6	4	18	21	Aerodrome of departure	X			
7	4	22	25	Aerodrome of arrival	X			
8	9	26	34	Flight identification	X			
9	1	35	35	Exemption code	X			
10	7	36	42	Aircraft type	X			
11	2	43	44	Claim reason code according to CRCO/user (corresp. to categ. of claim message)	X			
12	6	45	50	CRCO reference :           User number	X			
13	6	51	56	CRCO reference :           Pro Forma (bill) line number	X			
14	2	57	58	CRCO reference :           CLA serial number in respect of the same flight	X			
15	6	59	64	CRCO reference :           Claim number	X			
16	6	65	70	CLA request date (DDMMYY)	X			
17	7	71	77	Net charge billed (ECU)	X			
18	6	78	83	"Correct" date of flight according to user/CRCO (DDMMYY)			X	
19	4	84	87	"Correct" departure/entry time according to user (HHmm)			X	
20	4	88	91	"Correct" aerodrome of departure according to user/CRCO			X	
21	4	92	95	"Correct" aerodrome of arrival according to user/CRCO			X	
22	9	96	104	"Correct" flight identification according to user			X	
23	1	105	105	"Correct" exempt. code: <b>S</b> = State Flight ; <b>R</b> = Search and rescue flights by a competent SAR body ; <b>N</b> = Testing of equipm. used as ground aids to air navig. ; <b>E</b> = Test flights excl. to obtain/renew/maintain COA or COE <b>M</b> = Military flight of Member State ; <b>X</b> = Military flight of a non-Member State <b>T</b> = Training ; <b>V</b> = Visual Flight rules ; <b>Y</b> = Mixed VFR/IFR <b>H</b> = Humanitarian and <b>P</b> = Police and custom			X	
24	7	106	112	"Correct" aircraft type according to user/CRCO			X	
25	9	113	121	Aircraft reg. markings corresp. to "Correct" aircraft type as per user    (add. element)			X	
26	6	122	127	ATD corresp. to "correct" airport of departure as per user                   (add. element)			X	
27	6	128	133	ATA corresp. to "correct" airport of arrival as per user                   (add. element)			X	
28	20	134	153	Instructor name according to user				



CLA (CLAIM) REQUEST MESSAGE - EXTENDED FORMAT					Situation: 17-11-93		Printed: 8-01-08		Annex F2		
Transmission from CRCO to DTC											
Format		42									
Length		256 Characters									
Field Nr.	Field Length	Position		FIELD NAME	CLAIM REASON CODE 11						
		From	To		Unknown flight						
					obl.	opt.	forb.				
1	1	1	1	Type of message ("C" = CLA(im) message from CRCO)	X						
2	2	2	3	Destnation RCO	X						
3	6	4	9	Date of flight as billed to user (DDMMYY)	X						
4	4	10	13	Sequence number of message originator	X						
5	4	14	17	Departure/entry time (HHmm)	X						
6	4	18	21	Aerodrome of departure	X						
7	4	22	25	Aerodrome of arrival	X						
8	9	26	34	Flight identification	X						
9	1	35	35	Exemption code	X						
10	7	36	42	Aircraft type	X						
11	2	43	44	Claim reason code according to CRCO/user (corresp. to categ. of claim message)	X						
12	6	45	50	CRCO reference : User number	X						
13	6	51	56	CRCO reference : Pro Forma (bill) line number	X						
14	2	57	58	CRCO reference : CLA serial number in respect of the same flight	X						
15	6	59	64	CRCO reference : Claim number	X						
16	6	65	70	CLA request date (DDMMYY)	X						
17	7	71	77	Net charge billed (ECU)	X						
18	6	78	83	"Correct" date of flight according to user/CRCO (DDMMYY)			X				
19	4	84	87	"Correct" departure/entry time according to user (HHmm)			X				
20	4	88	91	"Correct" aerodrome of departure according to user/CRCO			X				
21	4	92	95	"Correct" aerodrome of arrival according to user/CRCO			X				
22	9	96	104	"Correct" flight identification according to user			X				
23	1	105	105	"Correct" exempt. code: S = State Flight ; R = Search and rescue flights by a competent SAR body ; N = Testing of equipm. used as ground aids to air navig. ; E = Test flights excl. to obtain/renew/maintain COA or COE M = Military flight of Member State ; X = Military flight of a non-Member State T = Training ; V = Visual Flight rules ; Y = Mixed VFR/IFR H = Humanitarian and P = Police and custom			X				
24	7	106	112	"Correct" aircraft type according to user/CRCO			X				
25	9	113	121	Aircraft reg. markings corresp. to "Correct" aircraft type as per user (add. element)			X				
26	6	122	127	ATD corresp. to "correct" airport of departure as per user (add. element)			X				
27	6	128	133	ATA corresp. to "correct" airport of arrival as per user (add. element)			X				
28	20	134	153	Instructor name according to user (add. element)			X				
29	2	154	155	Number of persons on board according to user (add. element)			X				
30	2	156	157	Message originator code for "correct" duplicate flight billed			X				
31	6	158	163	Date of "correct" duplic. flight as billed to user (DDMMYY)			X				
32	4	164	167	Sequence number of message originator re "correct" duplic. flight billed			X				
33	4	168	171	Departure time of "correct" duplic. flight as billed to user (HHmm)			X				
34	4	172	175	Aerodrome of departure of "correct" duplicate flight as billed to user			X				
35	4	176	179	Aerodrome of arrival of "correct" duplicate flight as billed to user			X				
36	9	180	188	Flight identification of "correct" duplicate flight as billed to user			X				
37	1	189	189	Exemption code of "correct" duplicate flight as billed to user			X				
38	7	190	196	Aircraft type of "correct" duplicate flight as billed to user			X				
39	60	197	256	CRCO remark		X					

CLA (CLAIM) REQUEST MESSAGE - EXTENDED FORMAT					Situation: 17-11-93		Printed: 8-01-08		Annex F3	
Transmission from CRCO to DTC										
Format		42								
Length		256 Characters								
Field Nr.	Field Length	Position		FIELD NAME	CLAIM REASON CODE					
		From	To		12					
					Wrong a/c type					
						obl.	opt.	forb.		
1	1	1	1	Type of message ("C" = CLA(im) message from CRCO)	X					
2	2	2	3	Destination RCO	X					
3	6	4	9	Date of flight as billed to user (DDMMYY)	X					
4	4	10	13	Sequence number of message originator	X					
5	4	14	17	Departure/entry time (HHmm)	X					
6	4	18	21	Aerodrome of departure	X					
7	4	22	25	Aerodrome of arrival	X					
8	9	26	34	Flight identification	X					
9	1	35	35	Exemption code	X					
10	7	36	42	Aircraft type	X					
11	2	43	44	Claim reason code according to CRCO/user (corresp. to categ. of claim message)	X					
12	6	45	50	CRCO reference : User number	X					
13	6	51	56	CRCO reference : Pro Forma (bill) line number	X					
14	2	57	58	CRCO reference : CLA serial number in respect of the same flight	X					
15	6	59	64	CRCO reference : Claim number	X					
16	6	65	70	CLA request date (DDMMYY)	X					
17	7	71	77	Net charge billed (ECU)	X					
18	6	78	83	"Correct" date of flight according to user/CRCO (DDMMYY)					X	
19	4	84	87	"Correct" departure/entry time according to user (HHmm)					X	
20	4	88	91	"Correct" aerodrome of departure according to user/CRCO					X	
21	4	92	95	"Correct" aerodrome of arrival according to user/CRCO					X	
22	9	96	104	"Correct" flight identification according to user					X	
23	1	105	105	"Correct" exempt. code: S = State Flight ; R = Search and rescue flights by a competent SAR body ; N = Testing of equipm. used as ground aids to air navig. ; E = Test flights excl. to obtain/renew/maintain COA or COE M = Military flight of Member State ; X = Military flight of a non-Member State T = Training ; V = Visual Flight rules ; Y = Mixed VFR/IFR H = Humanitarian and P = Police and custom					X	
24	7	106	112	"Correct" aircraft type according to user/CRCO	X					
25	9	113	121	Aircraft reg. markings corresp. to "Correct" aircraft type as per user (add. element)			X			
26	6	122	127	ATD corresp. to "correct" airport of departure as per user (add. element)					X	
27	6	128	133	ATA corresp. to "correct" airport of arrival as per user (add. element)					X	
28	20	134	153	Instructor name according to user (add. element)					X	
29	2	154	155	Number of persons on board according to user (add. element)					X	
30	2	156	157	Message originator code for "correct" duplicate flight billed					X	
31	6	158	163	Date of "correct" duplic. flight as billed to user (DDMMYY)					X	
32	4	164	167	Sequence number of message originator re "correct" duplic. flight billed					X	
33	4	168	171	Departure time of "correct" duplic. flight as billed to user (HHmm)					X	
34	4	172	175	Aerodrome of departure of "correct" duplicate flight as billed to user					X	
35	4	176	179	Aerodrome of arrival of "correct" duplicate flight as billed to user					X	
36	9	180	188	Flight identification of "correct" duplicate flight as billed to user					X	
37	1	189	189	Exemption code of "correct" duplicate flight as billed to user					X	
38	7	190	196	Aircraft type of "correct" duplicate flight as billed to user					X	
39	60	197	256	CRCO remark			X			

CLA (CLAIM) REQUEST MESSAGE - EXTENDED FORMAT					Situation: Printed: 17-11-93 8-01-08		Annex F4	
Transmission from CRCO to DTC								
Format		42						
Length		256 Characters						
Field Nr.	Field Length	Position		FIELD NAME	CLAIM REASON CODE			
		From	To		13			
					Wrong airport of dep.			
					obl.	opt.	forb.	
1	1	1	1	Type of message ("C" = CLA(im) message from CRCO)	X			
2	2	2	3	Destination RCO	X			
3	6	4	9	Date of flight as billed to user (DDMMYY)	X			
4	4	10	13	Sequence number of message originator	X			
5	4	14	17	Departure/entry time (HHmm)	X			
6	4	18	21	Aerodrome of departure	X			
7	4	22	25	Aerodrome of arrival	X			
8	9	26	34	Flight identification	X			
9	1	35	35	Exemption code	X			
10	7	36	42	Aircraft type	X			
11	2	43	44	Claim reason code according to CRCO/user (corresp. to categ. of claim message)	X			
12	6	45	50	CRCO reference : User number	X			
13	6	51	56	CRCO reference : Pro Forma (bill) line number	X			
14	2	57	58	CRCO reference : CLA serial number in respect of the same flight	X			
15	6	59	64	CRCO reference : Claim number	X			
16	6	65	70	CLA request date (DDMMYY)	X			
17	7	71	77	Net charge billed (ECU)	X			
18	6	78	83	"Correct" date of flight according to user/CRCO (DDMMYY)	X		X	
19	4	84	87	"Correct" departure/entry time according to user (HHmm)			X	
20	4	88	91	"Correct" aerodrome of departure according to user/CRCO				
21	4	92	95	"Correct" aerodrome of arrival according to user/CRCO			X	
22	9	96	104	"Correct" flight identification according to user			X	
23	1	105	105	"Correct" exempt. code: S = State Flight ; R = Search and rescue flights by a competent SAR body ; N = Testing of equipm. used as ground aids to air navig. ; E = Test flights excl. to obtain/renew/maintain COA or COE M = Military flight of Member State ; X = Military flight of a non-Member State T = Training ; V = Visual Flight rules ; Y = Mixed VFR/IFR H = Humanitarian and P = Police and custom			X	
24	7	106	112	"Correct" aircraft type according to user/CRCO			X	
25	9	113	121	Aircraft reg. markings corresp. to "Correct" aircraft type as per user (add. element)		X	X	
26	6	122	127	ATD corresp. to "correct" airport of departure as per user (add. element)				
27	6	128	133	ATA corresp. to "correct" airport of arrival as per user (add. element)			X	
28	20	134	153	Instructor name according to user (add. element)			X	
29	2	154	155	Number of persons on board according to user (add. element)			X	
30	2	156	157	Message originator code for "correct" duplicate flight billed			X	
31	6	158	163	Date of "correct" duplic. flight as billed to user (DDMMYY)			X	
32	4	164	167	Sequence number of message originator re "correct" duplic. flight billed			X	
33	4	168	171	Departure time of "correct" duplic. flight as billed to user (HHmm)			X	
34	4	172	175	Aerodrome of departure of "correct" duplicate flight as billed to user			X	
35	4	176	179	Aerodrome of arrival of "correct" duplicate flight as billed to user			X	
36	9	180	188	Flight identification of "correct" duplicate flight as billed to user			X	
37	1	189	189	Exemption code of "correct" duplicate flight as billed to user			X	
38	7	190	196	Aircraft type of "correct" duplicate flight as billed to user			X	
39	60	197	256	CRCO remark				X

CLA (CLAIM) REQUEST MESSAGE - EXTENDED FORMAT					Situation: 17-11-93	Printed: 8-01-08	Annex F5		
Transmission from CRCO to DTC									
Format		42							
Length		256 Characters							
Field Nr.	Field Length	Position		FIELD NAME	CLAIM REASON CODE				
		From	To		14				
					Wrong airport of arrival				
					obl.	opt.	forb.		
1	1	1	1	Type of message ("C" = CLA(im) message from CRCO)	X				
2	2	2	3	Message originator code	X				
3	6	4	9	Date of flight as billed to user (DDMMYY)	X				
4	4	10	13	Sequence number of message originator	X				
5	4	14	17	Departure/entry time (HHmm)	X				
6	4	18	21	Aerodrome of departure	X				
7	4	22	25	Aerodrome of arrival	X				
8	9	26	34	Flight identification	X				
9	1	35	35	Exemption code	X				
10	7	36	42	Aircraft type	X				
11	2	43	44	Claim reason code according to CRCO/user (corresp. to categ. of claim message)	X				
12	6	45	50	CRCO reference :           User number	X				
13	6	51	56	CRCO reference :           Pro Forma (bill) line number	X				
14	2	57	58	CRCO reference :           CLA serial number in respect of the same flight	X				
15	6	59	64	CRCO reference :           Claim number	X				
16	6	65	70	CLA request date (DDMMYY)	X				
17	7	71	77	Net charge billed (ECU)	X				
18	6	78	83	"Correct" date of flight according to user/CRCO (DDMMYY)	X		X		
19	4	84	87	"Correct" departure/entry time according to user (HHmm)			X		
20	4	88	91	"Correct" aerodrome of departure according to user/CRCO			X		
21	4	92	95	"Correct" aerodrome of arrival according to user/CRCO					
22	9	96	104	"Correct" flight identification according to user			X		
23	1	105	105	"Correct" exempt. code: <b>S</b> = State Flight ; <b>R</b> = Search and rescue flights by a competent SAR body ; <b>N</b> = Testing of equipm. used as ground aids to air navig. ; <b>E</b> = Test flights excl. to obtain/renew/maintain COA or COE <b>M</b> = Military flight of Member State ; <b>X</b> = Military flight of a non-Member State <b>T</b> = Training ; <b>V</b> = Visual Flight rules ; <b>Y</b> = Mixed VFR/IFR <b>H</b> = Humanitarian and <b>P</b> = Police and custom			X		
24	7	106	112	"Correct" aircraft type according to user/CRCO			X		
25	9	113	121	Aircraft reg. markings corresp. to "Correct" aircraft type as per user (add. element)			X	X	
26	6	122	127	ATD corresp. to "correct" airport of departure as per user (add. element)				X	
27	6	128	133	ATA corresp. to "correct" airport of arrival as per user (add. element)					
28	20	134	153	Instructor name according to user (add. element)					
29	2	154	155	Number of persons on board according to user (add. element)				X	
30	2	156	157	Message originator code for "correct" duplicate flight billed				X	
31	6	158	163	Date of "correct" duplic. flight as billed to user (DDMMYY)				X	
32	4	164	167	Sequence number of message originator re "correct" duplic. flight billed				X	
33	4	168	171	Departure time of "correct" duplic. flight as billed to user (HHmm)				X	
34	4	172	175	Aerodrome of departure of "correct" duplicate flight as billed to user				X	
35	4	176	179	Aerodrome of arrival of "correct" duplicate flight as billed to user				X	
36	9	180	188	Flight identification of "correct" duplicate flight as billed to user				X	
37	1	189	189	Exemption code of "correct" duplicate flight as billed to user				X	
38	7	190	196	Aircraft type of "correct" duplicate flight as billed to user				X	
39	60	197	256	CRCO remark					X

CLA (CLAIM) REQUEST MESSAGE - EXTENDED FORMAT					Situation: 17-11-93	Printed: 8-01-08	Annex F6	
Transmission from CRCO to DTC								
Format		42						
Length		256 Characters						
Field Nr.	Field Length	Position		FIELD NAME	CLAIM REASON CODE			
		From	To		15			
					obl.	VFR opt.	forb.	
1	1	1	1	Type of message ("C" = CLA(im) message from CRCO)	X			
2	2	2	3	Message originator code	X			
3	6	4	9	Date of flight as billed to user (DDMMYY)	X			
4	4	10	13	Sequence number of message originator	X			
5	4	14	17	Departure/entry time (HHmm)	X			
6	4	18	21	Aerodrome of departure	X			
7	4	22	25	Aerodrome of arrival	X			
8	9	26	34	Flight identification	X			
9	1	35	35	Exemption code	X			
10	7	36	42	Aircraft type	X			
11	2	43	44	Claim reason code according to CRCO/user (corresp. to categ. of claim message)	X			
12	6	45	50	CRCO reference :        User number	X			
13	6	51	56	CRCO reference :        Pro Forma (bill) line number	X			
14	2	57	58	CRCO reference :        CLA serial number in respect of the same flight	X			
15	6	59	64	CRCO reference :        Claim number	X			
16	6	65	70	CLA request date (DDMMYY)	X			
17	7	71	77	Net charge billed (ECU)	X			
18	6	78	83	"Correct" date of flight according to user/CRCO (DDMMYY)			X	
19	4	84	87	"Correct" departure/entry time according to user (HHmm)			X	
20	4	88	91	"Correct" aerodrome of departure according to user/CRCO			X	
21	4	92	95	"Correct" aerodrome of arrival according to user/CRCO			X	
22	9	96	104	"Correct" flight identification according to user			X	
23	1	105	105	"Correct" exempt. code: <b>S</b> = State Flight ; <b>R</b> = Search and rescue flights by a competent SAR body ; <b>N</b> = Testing of equipm. used as ground aids to air navig. ; <b>E</b> = Test flights excl. to obtain/renew/maintain COA or COE <b>M</b> = Military flight of Member State ; <b>X</b> = Military flight of a non-Member State <b>T</b> = Training ; <b>V</b> = Visual Flight rules ; <b>Y</b> = Mixed VFR/IFR <b>H</b> = Humanitarian and <b>P</b> = Police and custom			X	
24	7	106	112	"Correct" aircraft type according to user/CRCO			X	
25	9	113	121	Aircraft reg. markings corresp. to "Correct" aircraft type as per user        (add. element)			X	
26	6	122	127	ATD corresp. to "correct" airport of departure as per user        (add. element)			X	
27	6	128	133	ATA corresp. to "correct" airport of arrival as per user        (add. element)			X	
28	20	134	153	Instructor name according to user        (add. element)			X	
29	2	154	155	Number of persons on board according to user        (add. element)			X	
30	2	156	157	Message originator code for "correct" duplicate flight billed			X	
31	6	158	163	Date of "correct" duplic. flight as billed to user (DDMMYY)			X	
32	4	164	167	Sequence number of message originator re "correct" duplic. flight billed			X	
33	4	168	171	Departure time of "correct" duplic. flight as billed to user (HHmm)			X	
34	4	172	175	Aerodrome of departure of "correct" duplicate flight as billed to user			X	
35	4	176	179	Aerodrome of arrival of "correct" duplicate flight as billed to user			X	
36	9	180	188	Flight identification of "correct" duplicate flight as billed to user			X	
37	1	189	189	Exemption code of "correct" duplicate flight as billed to user			X	
38	7	190	196	Aircraft type of "correct" duplicate flight as billed to user			X	
39	60	197	256	CRCO remark		X		

CLA (CLAIM) REQUEST MESSAGE - EXTENDED FORMAT					Situation: 17-11-93		Printed: 7-05-08		Annex F7	
Transmission from CRCO to DTC / RCO										
Format		42								
Length		256 Characters								
Field Nr.	Field Length	Position		FIELD NAME	CLAIM REASON CODE					
		From	To		16					
					obl.	Training opt.	forb.			
1	1	1	1	Type of message ("C" = CLA(im) message from CRCO)	X					
2	2	2	3	Message originator code	X					
3	6	4	9	Date of flight as billed to user (DDMMYY)	X					
4	4	10	13	Sequence number of message originator	X					
5	4	14	17	Departure/entry time (HHmm)	X					
6	4	18	21	Aerodrome of departure	X					
7	4	22	25	Aerodrome of arrival	X					
8	9	26	34	Flight identification	X					
9	1	35	35	Exemption code	X					
10	7	36	42	Aircraft type	X					
11	2	43	44	Claim reason code according to CRCO/user (corresp. to categ. of claim message)	X					
12	6	45	50	CRCO reference : User number	X					
13	6	51	56	CRCO reference : Pro Forma (bill) line number	X					
14	2	57	58	CRCO reference : CLA serial number in respect of the same flight	X					
15	6	59	64	CRCO reference : Claim number	X					
16	6	65	70	CLA request date (DDMMYY)	X					
17	7	71	77	Net charge billed (ECU)	X					
18	6	78	83	"Correct" date of flight according to user/CRCO (DDMMYY)			X			
19	4	84	87	"Correct" departure/entry time according to user (HHmm)			X			
20	4	88	91	"Correct" aerodrome of departure according to user/CRCO			X			
21	4	92	95	"Correct" aerodrome of arrival according to user/CRCO			X			
22	9	96	104	"Correct" flight identification according to user			X			
23	1	105	105	"Correct" exempt. code: T = Training,	X					
24	7	106	112	"Correct" aircraft type according to user/CRCO			X			
25	9	113	121	Aircraft reg. markings corresp. to "Correct" aircraft type as per user (add. element)			X			
26	6	122	127	ATD corresp. to "correct" airport of departure as per user (add. element)			X			
27	6	128	133	ATA corresp. to "correct" airport of arrival as per user (add. element)			X			
28	20	134	153	Instructor name according to user (add. element)		X				
29	2	154	155	Number of persons on board according to user (add. element)		X				
30	2	156	157	Message originator code for "correct" duplicate flight billed			X			
31	6	158	163	Date of "correct" duplic. flight as billed to user (DDMMYY)			X			
32	4	164	167	Sequence number of message originator re "correct" duplic. flight billed			X			
33	4	168	171	Departure time of "correct" duplic. flight as billed to user (HHmm)			X			
34	4	172	175	Aerodrome of departure of "correct" duplicate flight as billed to user			X			
35	4	176	179	Aerodrome of arrival of "correct" duplicate flight as billed to user			X			
36	9	180	188	Flight identification of "correct" duplicate flight as billed to user			X			
37	1	189	189	Exemption code of "correct" duplicate flight as billed to user			X			
38	7	190	196	Aircraft type of "correct" duplicate flight as billed to user			X			
39	60	197	256	CRCO remark		X				

CLA (CLAIM) REQUEST MESSAGE - EXTENDED FORMAT					Situation: 17-11-93	Printed: 7-05-08	Annex F8	
Transmission from CRCO to DTC								
Format		42						
Length		256 Characters						
Field Nr.	Field Length	Position		FIELD NAME	CLAIM REASON CODE			
		From	To		18			
					obl.	Exemption opt.	forb.	
1	1	1	1	Type of message ("C" = CLA(im) message from CRCO)	X			
2	2	2	3	Message originator code	X			
3	6	4	9	Date of flight as billed to user (DDMMYY)	X			
4	4	10	13	Sequence number of message originator	X			
5	4	14	17	Departure/entry time (HHmm)	X			
6	4	18	21	Aerodrome of departure	X			
7	4	22	25	Aerodrome of arrival	X			
8	9	26	34	Flight identification	X			
9	1	35	35	Exemption code	X			
10	7	36	42	Aircraft type	X			
11	2	43	44	Claim reason code according to CRCO/user (corresp. to categ. of claim message)	X			
12	6	45	50	CRCO reference :           User number	X			
13	6	51	56	CRCO reference :           Pro Forma (bill) line number	X			
14	2	57	58	CRCO reference :           CLA serial number in respect of the same flight	X			
15	6	59	64	CRCO reference :           Claim number	X			
16	6	65	70	CLA request date (DDMMYY)	X			
17	7	71	77	Net charge billed (ECU)	X			
18	6	78	83	"Correct" date of flight according to user/CRCO (DDMMYY)			X	
19	4	84	87	"Correct" departure/entry time according to user (HHmm)			X	
20	4	88	91	"Correct" aerodrome of departure according to user/CRCO			X	
21	4	92	95	"Correct" aerodrome of arrival according to user/CRCO			X	
22	9	96	104	"Correct" flight identification according to user			X	
23	1	105	105	"Correct" exempt. code: <b>S</b> = State Flight ; <b>R</b> = Search and rescue flights by a competent SAR body ; <b>N</b> = Testing of equipm. used as ground aids to air navig. ; <b>E</b> = Test flights excl. to obtain/renew/maintain COA or COE <b>M</b> = Military flight of Member State ; <b>X</b> = Military flight of a non-Member State <b>H</b> = Humanitarian and <b>P</b> = Police and custom	X			
24	7	106	112	"Correct" aircraft type according to user/CRCO			X	
25	9	113	121	Aircraft reg. markings corresp. to "Correct" aircraft type as per user   (add. element)			X	
26	6	122	127	ATD corresp. to "correct" airport of departure as per user                   (add. element)			X	
27	6	128	133	ATA corresp. to "correct" airport of arrival as per user                   (add. element)			X	
28	20	134	153	Instructor name according to user				

CLA (CLAIM) REQUEST MESSAGE - EXTENDED FORMAT					Situation: 17-11-93	Printed: 8-01-08	Annex F9	
Transmission from CRCO to DTC								
Format		42						
Length		256 Characters						
Field Nr.	Field Length	Position		FIELD NAME	CLAIM REASON CODE			
		From	To		40			
					Duplicate billing			
				obl.			opt.	forb.
1	1	1	1	Type of message ("C" = CLA(im) message from CRCO)	X			
2	2	2	3	Message originator code	X			
3	6	4	9	Date of flight as billed to user (DDMMYY)	X			
4	4	10	13	Sequence number of message originator	X			
5	4	14	17	Departure/entry time (HHmm)	X			
6	4	18	21	Aerodrome of departure	X			
7	4	22	25	Aerodrome of arrival	X			
8	9	26	34	Flight identification	X			
9	1	35	35	Exemption code	X			
10	7	36	42	Aircraft type	X			
11	2	43	44	Claim reason code according to CRCO/user (corresp. to categ. of claim message)	X			
12	6	45	50	CRCO reference : User number	X			
13	6	51	56	CRCO reference : Pro Forma (bill) line number	X			
14	2	57	58	CRCO reference : CLA serial number in respect of the same flight	X			
15	6	59	64	CRCO reference : Claim number	X			
16	6	65	70	CLA request date (DDMMYY)	X			
17	7	71	77	Net charge billed (ECU)	X			
18	6	78	83	"Correct" date of flight according to user/CRCO (DDMMYY)				X
19	4	84	87	"Correct" departure/entry time according to user (HHmm)				X
20	4	88	91	"Correct" aerodrome of departure according to user/CRCO				X
21	4	92	95	"Correct" aerodrome of arrival according to user/CRCO				X
22	9	96	104	"Correct" flight identification according to user				X
23	1	105	105	"Correct" exempt. code: S = State Flight ; R = Search and rescue flights by a competent SAR body ; N = Testing of equipm. used as ground aids to air navig. ; E = Test flights excl. to obtain/renew/maintain COA or COE M = Military flight of Member State ; X = Military flight of a non-Member State T = Training ; V = Visual Flight rules ; Y = Mixed VFR/IFR H = Humanitarian and P = Police and custom				X
24	7	106	112	"Correct" aircraft type according to user/CRCO				X
25	9	113	121	Aircraft reg. markings corresp. to "Correct" aircraft type as per user (add. element)				X
26	6	122	127	ATD corresp. to "correct" airport of departure as per user (add. element)				X
27	6	128	133	ATA corresp. to "correct" airport of arrival as per user (add. element)				X
28	20	134	153	Instructor name according to user (add. element)				X
29	2	154	155	Number of persons on board according to user (add. element)				X
30	2	156	157	Message originator code for "correct" duplicate flight billed	X			
31	6	158	163	Date of "correct" duplic. flight as billed to user (DDMMYY)	X			
32	4	164	167	Sequence number of message originator re "correct" duplic. flight billed	X			
33	4	168	171	Departure time of "correct" duplic. flight as billed to user (HHmm)	X			
34	4	172	175	Aerodrome of departure of "correct" duplicate flight as billed to user	X			
35	4	176	179	Aerodrome of arrival of "correct" duplicate flight as billed to user	X			
36	9	180	188	Flight identification of "correct" duplicate flight as billed to user	X			
37	1	189	189	Exemption code of "correct" duplicate flight as billed to user	X			
38	7	190	196	Aircraft type of "correct" duplicate flight as billed to user	X			
39	60	197	256	CRCO remark			X	



CLA (CLAIM) REQUEST MESSAGE - EXTENDED FORMAT					Situation: 17-11-93 Printed: 8-01-08		Annex F10	
Transmission from CRCO to DTC								
Format 42								
Length 256		Characters						
Field Nr.	Field Length	Position		FIELD NAME	CLAIM REASON CODE			
		From	To		99			
					obl.	opt.	forb.	
1	1	1	1	Type of message ("C" = CLA(im) message from CRCO)	X			
2	2	2	3	Message originator code	X			
3	6	4	9	Date of flight as billed to user (DDMMYY)	X			
4	4	10	13	Sequence number of message originator	X			
5	4	14	17	Departure/entry time (HHmm)	X			
6	4	18	21	Aerodrome of departure	X			
7	4	22	25	Aerodrome of arrival	X			
8	9	26	34	Flight identification	X			
9	1	35	35	Exemption code	X			
10	7	36	42	Aircraft type	X			
11	2	43	44	Claim reason code according to CRCO/user (corresp. to categ. of claim message)	X			
12	6	45	50	CRCO reference : User number	X			
13	6	51	56	CRCO reference : Pro Forma (bill) line number	X			
14	2	57	58	CRCO reference : CLA serial number in respect of the same flight	X			
15	6	59	64	CRCO reference : Claim number	X			
16	6	65	70	CLA request date (DDMMYY)	X			
17	7	71	77	Net charge billed (ECU)	X			
18	6	78	83	"Correct" date of flight according to user/CRCO (DDMMYY)		X		
19	4	84	87	"Correct" departure/entry time according to user (HHmm)		X		
20	4	88	91	"Correct" aerodrome of departure according to user/CRCO		X		
21	4	92	95	"Correct" aerodrome of arrival according to user/CRCO		X		
22	9	96	104	"Correct" flight identification according to user		X		
23	1	105	105	"Correct" exempt. code: S = State Flight ; R = Search and rescue flights by a competent SAR body ; N = Testing of equipm. used as ground aids to air navig. ; E = Test flights excl. to obtain/renew/maintain COA or COE M = Military flight of Member State ; X = Military flight of a non-Member State T = Training ; V = Visual Flight rules ; Y = Mixed VFR/IFR H = Humanitarian and P = Police and custom		X		
24	7	106	112	"Correct" aircraft type according to user/CRCO		X		
25	9	113	121	Aircraft reg. markings corresp. to "Correct" aircraft type as per user (add. element)		X		
26	6	122	127	ATD corresp. to "correct" airport of departure as per user (add. element)		X		
27	6	128	133	ATA corresp. to "correct" airport of arrival as per user (add. element)		X		
28	20	134	153	Instructor name according to user (add. element)		X		
29	2	154	155	Number of persons on board according to user (add. element)		X		
30	2	156	157	Message originator code for "correct" duplicate flight billed		X		
31	6	158	163	Date of "correct" duplic. flight as billed to user (DDMMYY)		X		
32	4	164	167	Sequence number of message originator re "correct" duplic. flight billed		X		
33	4	168	171	Departure time of "correct" duplic. flight as billed to user (HHmm)		X		
34	4	172	175	Aerodrome of departure of "correct" duplicate flight as billed to user		X		
35	4	176	179	Aerodrome of arrival of "correct" duplicate flight as billed to user		X		
36	9	180	188	Flight identification of "correct" duplicate flight as billed to user		X		
37	1	189	189	Exemption code of "correct" duplicate flight as billed to user		X		
38	7	190	196	Aircraft type of "correct" duplicate flight as billed to user		X		
39	60	197	256	CRCO remark	X			

## **ANNEX G. CLA reply rules**

CLA (CLAIM) REPLY MESSAGE - EXTENDED FORMAT					Situation: 20-06-96		Printed: 8-01-08		Annex G1	
Transmission from the DTC to the CRCO										
Format : 50					CLAIM REASON CODE 10					
Length : 205 characters										
					(Cancelled Flight) Decision codes					
Field Number	Field Length	Position From To		FIELD NAME	A (ACP) obl. opt. forb.	C (QTA) obl. opt. forb.	M (CHG) obl. opt. forb.	R (CFM) obl. opt. forb.		
1	1	1	1	Type of message ("Z" = CLA(im) reply message from RCO )	X	X	X	X		
2	6	2	7	Date of flight as billed to user (DDMMYY)	X	X	X	X		
3	6	8	13	CRCO reference : User number	X	X	X	X		
4	6	14	19	CRCO reference : Pro-forma line number	X	X	X	X		
5	2	20	21	CRCO reference : CLA(im) serial number on flight	X	X	X	X		
6	6	22	27	CRCO reference : Claim number	X	X	X	X		
7	6	28	33	CLA reply date as generated by the RCO (DDMMYY)	X	X	X	X		
8	2	34	35	Claim reason code proposed by RCO	X	X	X	X		
9	1	36	36	Claim decision code proposed by RCO : A = ACP (claim accepted as per CLA request -i.e.cancelled or modified flight message) C = QTA (flight message to be cancelled for a reason different from CLA request) M = CHG (flight message to be modified for a reason different from CLA request) R = CFM (claim rejected/original flight message confirmed as correct)	X	X	X	X		
10	6	37	42	"Corrected" date of flight according to RCO (DDMMYY)	X	X	X	X		
11	4	43	46	"Corrected" time of departure/entry into charges region according to RCO (HHmm)	X	X	X	X		
12	4	47	50	"Corrected" aerodrome of departure according to RCO	X	X	X	X		
13	4	51	54	"Corrected" aerodrome of destination according to RCO	X	X	X	X		
14	9	55	63	"Corrected" flight identification according to RCO	X	X	X	X		
15	1	64	64	"Corrected" exempt. code: S = State Flight ; R = Search and rescue flights by a competent SAR body ; N = Testing of equipm. used as ground aids to air navig. ; E = Test flights excl. to obtain/renew/maintain COA or COE M = Military flight of Member State ; X = Military flight of a non-Member State T = Training ; V = Visual Flight rules ; Y = Mixed VFR/IFR H = Humanitarian and P = Police and custom	X	X	X	X		
16	7	65	71	"Corrected" aircraft type according to RCO	X	X	X	X		
17	9	72	80	"Confirmed" flight identification as billed	X	X	X	X*		
18	9	81	89	"Confirmed" aircraft registration markings corresp. to aircraft type billed	X	X	X	X*		
19	6	90	95	"Confirmed" ATD from billed airport of departure (DDHHmm)	X	X	X	X*		
20	4	96	99	"Confirmed" aerodrome of departure as billed	X	X	X	X*		
21	6	100	105	"Confirmed" ATA at billed airport of arrival (DDHHmm)	X	X	X	X*		
22	4	106	109	"Confirmed" aerodrome of arrival as billed	X	X	X	X*		
23	6	110	115	"Confirmed" 1st ATO (DDHHmm)	X	X	X	X*		
24	5	116	120	"Confirmed" 1st (compulsory) reporting point (3 char.) or geographical point (5 char.)	X	X	X	X*		
25	6	121	126	"Confirmed" 2nd ATO (DDHHmm)	X	X	X	X*		
26	5	127	131	"Confirmed" 2nd (compulsory) reporting point (3 char.) or geographical point (5 char.)	X	X	X	X*		
27	1	132	132	"Confirmed" IFR daylight criterion : 1 = sunrise at airport of departure 2 = sunset at airport of departure 3= sunset at airport of arrival 4 = sunrise at airport of arrival	X	X	X	X		
28	4	133	136	"Confirmed" IFR sunrise/sunset time (HHmm)	X	X	X	X		
29	1	137	137	"Confirmed" nature of IFR proof 1 = IFR FPL available 2 = IFR strip available 3 = Airport departure log avail. 4 = Airport arrival log available 5 = IFR FPL + strip available	X	X	X	X		
30	7	138	144	"Confirmed" source of IFR proof : ICAO 4-letter indicator (4 characters) or ICAO 4-letter indicator and categ. of center in charge of FIR (3 characters - i.e. ZQZ or ZPZ)	X	X	X	X		
31	1	145	145	"Confirmed" exemption rejection code: 1 = No "X" in field 8 of FPL and/or no relevant "RMK " in field 18 of FPL 2 = No relevant remarks detected on airport dep. log 3 = No relevant remarks detected on airport arr. log 4 = No relevant remarks detected on IFR flight progress strip	X	X	X	X		
32	60	146	205	Remarks made by RCO (Max. 60 characters)	X	X	X	X*		

\* Please refer to Annex H-1 for further details on confirmation elements required.

CLA (CLAIM) REPLY MESSAGE - EXTENDED FORMAT					Situation: 20-06-96		Printed: 8-01-08		Annex G2	
Transmission from the DTC to the CROO										
Format : 50										
Length : 205 characters										
					CLAIM REASON CODE II					
					(Unknown flight) Decision codes					
Field Number	Field Length	Position From To		FIELD NAME	A (ACP) obl. opt. forb.	C (QTA) obl. opt. forb.	M (CHG) obl. opt. forb.	R (CFM) obl. opt. forb.		
1	1	1	1	Type of message ("Z"=CLA(im) reply message from RCO)	X	X	X	X		
2	6	2	7	Date of flight as billed to user (DDMMYY)	X	X	X	X		
3	6	8	13	CRCO reference: User number	X	X	X	X		
4	6	14	19	CRCO reference: Pro-forma line number	X	X	X	X		
5	2	20	21	CRCO reference: CLA(im) serial number on flight	X	X	X	X		
6	6	22	27	CRCO reference: Claim number	X	X	X	X		
7	6	28	33	CLAreply date as generated by the RCO (DDMMYY)	X	X	X	X		
8	2	34	35	Claim reason code proposed by RCO	X	X	X	X		
9	1	36	36	Claim decision code proposed by RCO: A=ACP (claim accepted as per CLA request -i.e.cancelled or modified flight message) C=QTA (flight message to be cancelled for a reason different from CLA request) M=CHG (flight message to be modified for a reason different from CLA request) R=CFM (claim rejected/original flight message confirmed as correct)	X	X	X	X		
10	6	37	42	"Corrected" date of flight according to RCO (DDMMYY)	X	X	X*	X		
11	4	43	46	"Corrected" time of departure/entry into charges region according to RCO (HHmm)	X	X	X*	X		
12	4	47	50	"Corrected" aerodrome of departure according to RCO	X	X	X	X		
13	4	51	54	"Corrected" aerodrome of destination according to RCO	X	X	X	X		
14	9	55	63	"Corrected" flight identification according to RCO	X	X	X*	X		
15	1	64	64	"Corrected" exempt. code: S=State Flight ; R=Search and rescue flights by a competent SAR body ; N=Testing of equipm used as ground aids to air navig. ; E=Test flights excl. to obtain/renew/maintain COA or COE M=Military flight of Member State ; X=Military flight of a non-Member State T=Training ; V=Visual Flight rules ; Y=Mixed VFR/IFR H=Humanitarian and P=Police and custom	X	X	X	X		
16	7	65	71	"Corrected" aircraft type according to RCO	X	X	X	X		
17	9	72	80	"Confirmed" flight identification as billed	X	X	X	X*		
18	9	81	89	"Confirmed" aircraft registration markings corresp. to aircraft type billed	X	X	X	X*		
19	6	90	95	"Confirmed" AID from billed airport of departure (DDHHmm)	X	X	X	X*		
20	4	96	99	"Confirmed" aerodrome of departure as billed	X	X	X	X*		
21	6	100	105	"Confirmed" ATA at billed airport of arrival (DDHHmm)	X	X	X	X*		
22	4	106	109	"Confirmed" aerodrome of arrival as billed	X	X	X	X*		
23	6	110	115	"Confirmed" 1st ATO (DDHHmm)	X	X	X	X*		
24	5	116	120	"Confirmed" 1st (compulsory) reporting point (3 char.) or geographical point (5 char.)	X	X	X	X*		
25	6	121	126	"Confirmed" 2nd ATO (DDHHmm)	X	X	X	X*		
26	5	127	131	"Confirmed" 2nd (compulsory) reporting point (3 char.) or geographical point (5 char.)	X	X	X	X*		
27	1	132	132	"Confirmed" IFR daylight criterion: 1=sunrise at airport of departure 2=sunset at airport of departure 3=sunset at airport of arrival 4=sunrise at airport of arrival	X	X	X	X		
28	4	133	136	"Confirmed" IFR sunrise/sunset time (HHmm)	X	X	X	X		
29	1	137	137	"Confirmed" nature of IFR proof available: 1=IFR FPL available 2=IFR strip available 3=Airport departure log avail. 4=Airport arrival log available 5=IFR FPL+strip available	X	X	X	X		
30	7	138	144	"Confirmed" source of IFR proof: ICAO 4-letter indicator (4 characters) or ICAO 4-letter indicator and categ. of center in charge of FIR (3 characters - i.e. ZQZ or ZPZ)	X	X	X	X		
31	1	145	145	"Confirmed" exemption rejection code: 1=No "X" in field 8 of FPL and/or no relevant "RMK" in field 18 of FPL 2=No relevant remarks detected on airport dep. log 3=No relevant remarks detected on airport arr. log 4=No relevant remarks detected on IFR flight progress strip	X	X	X	X		
32	60	146	205	Remarks made by RCO (Max. 60 characters)	X	X	X	X*		

\* Please refer to Annex H-1 for further details on confirmation elements required.

CLA (CLAIM) REPLY MESSAGE - EXTENDED FORMAT					Situation: 16-11-93		Printed: 8-01-08		Annex G3	
Transmission from the DTC to the CRCO										
Format : 50					CLAIM REASON CODE 12					
Length : 205 characters										
					(Wrong Aircraft Type)					
					Decision codes					
Field	Field	Position		FIELD NAME	A (ACP)	C (QTA)	M (CHG)	R (CFM)		
Number	Length	From	To		obl. opt. forb.	obl. opt. forb.	obl. opt. forb.	obl. opt. forb.		
1	1	1	1	Type of message ("Z" = CLA(im) reply message from RCO)	X		X	X		
2	6	2	7	Date of flight as billed to user (DDMMYY)	X		X	X		
3	6	8	13	CRCO reference : User number	X		X	X		
4	6	14	19	CRCO reference : Pro-forma line number	X		X	X		
5	2	20	21	CRCO reference : CLA(im) serial number on flight	X		X	X		
6	6	22	27	CRCO reference : Claim number	X		X	X		
7	6	28	33	CLA reply date as generated by the RCO (DDMMYY)	X		X	X		
8	2	34	35	Claim reason code proposed by RCO	X		X	X		
9	1	36	36	Claim decision code proposed by RCO : A = ACP (claim accepted as per CLA request -i.e.cancelled or modified flight message) C = QTA (flight message to be cancelled for a reason different from CLA request) M = CHG (flight message to be modified for a reason different from CLA request) R = CFM (claim rejected/original flight message confirmed as correct)	X		X	X		
10	6	37	42	"Corrected" date of flight according to RCO (DDMMYY)	X	X	X	X		
11	4	43	46	"Corrected" time of departure/entry into charges region according to RCO (HHmm)	X	X	X	X		
12	4	47	50	"Corrected" aerodrome of departure according to RCO	X	X	X	X		
13	4	51	54	"Corrected" aerodrome of destination according to RCO	X	X	X	X		
14	9	55	63	"Corrected" flight identification according to RCO	X	X	X	X		
15	1	64	64	"Corrected" exempt. code: S = State Flight ; R = Search and rescue flights by a competent SAR body ; N = Testing of equipm. used as ground aids to air navig. ; E = Test flights excl. to obtain/renew/maintain COA or COE M = Military flight of Member State ; X = Military flight of a non-Member State T = Training ; V = Visual Flight rules ; Y = Mixed VFR/IFR H = Humanitarian and P = Police and custom	X	X	X	X		
16	7	65	71	"Corrected" aircraft type according to RCO	X	X	X	X		
17	9	72	80	"Confirmed" flight identification as billed	X	X	X	X		
18	9	81	89	"Confirmed" aircraft registration markings corresp. to aircraft type billed	X	X	X	X		
19	6	90	95	"Confirmed" ATD from billed airport of departure (DDHHmm)	X	X	X	X		
20	4	96	99	"Confirmed" aerodrome of departure as billed	X	X	X	X		
21	6	100	105	"Confirmed" ATA at billed airport of arrival (DDHHmm)	X	X	X	X		
22	4	106	109	"Confirmed" aerodrome of arrival as billed	X	X	X	X		
23	6	110	115	"Confirmed" 1st ATO (DDHHmm)	X	X	X	X		
24	5	116	120	"Confirmed" 1st (compulsory) reporting point (3 char.) or geographical point (5 char.)	X	X	X	X		
25	6	121	126	"Confirmed" 2nd ATO (DDHHmm)	X	X	X	X		
26	5	127	131	"Confirmed" 2nd (compulsory) reporting point (3 char.) or geographical point (5 char.)	X	X	X	X		
27	1	132	132	"Confirmed" IFR daylight criterion : 1 = sunrise at airport of departure 2 = sunset at airport of departure 3=sunset at airport of arrival 4 = sunrise at airport of arrival	X	X	X	X		
28	4	133	136	"Confirmed" IFR sunrise/sunset time (HHmm)	X	X	X	X		
29	1	137	137	"Confirmed" nature of IFR proof 1 = IFR FPL available available : 2 = IFR strip available 3 = Airport departure log avail. 4 = Airport arrival log available 5 = IFR FPL + strip available	X	X	X	X		
30	7	138	144	"Confirmed" source of IFR proof : ICAO 4-letter indicator (4 characters) or ICAO 4-letter indicator and categ. of center in charge of FIR (3 characters - i.e. ZQZ or ZPZ)	X	X	X	X		
31	1	145	145	"Confirmed" exemption rejection code: 1 = No "X" in field 8 of FPL and/or no relevant "RMK" in field 18 of FPL 2 = No relevant remarks detected on airport dep. log 3 = No relevant remarks detected on airport arr. log 4 = No relevant remarks detected on IFR flight progress strip	X	X	X	X		
32	60	146	205	Remarks made by RCO (Max. 60 characters)	X	X	X	X		

CLA (CLAIM) REPLY MESSAGE - EXTENDED FORMAT					Situation: 16-11-93	Printed: 8-01-08	Annex G4	
Transmission from the DTC to the CRCO								
Format : 50								
Length : 205 characters					CLAIM REASON CODE <b>13</b>			
					(Wrong Airport of Dep.)			
					Decision codes			
Field Number	Field Length	Position From To		FIELD NAME	A (ACP) obl. opt. forb.	C (QTA) obl. opt. forb.	M (CHG) obl. opt. forb.	R (CFM) obl. opt. forb.
1	1	1	1	Type of message ("Z" = CLA(im) reply message from RCO)	X	X	X	X
2	6	2	7	Date of flight as billed to user (DDMMYY)	X	X	X	X
3	6	8	13	CRCO reference : User number	X	X	X	X
4	6	14	19	CRCO reference : Pro-forma line number	X	X	X	X
5	2	20	21	CRCO reference : CLA(im) serial number on flight	X	X	X	X
6	6	22	27	CRCO reference : Claim number	X	X	X	X
7	6	28	33	CLA reply date as generated by the RCO (DDMMYY)	X	X	X	X
8	2	34	35	Claim reason code proposed by RCO	X	X	X	X
9	1	36	36	Claim decision code proposed by RCO : A = ACP (claim accepted as per CLA request - i.e. cancelled or modified flight message) C = QTA (flight message to be cancelled for a reason different from CLA request) M = CHG (flight message to be modified for a reason different from CLA request) R = CFM (claim rejected/original flight message confirmed as correct)	X	X	X	X
10	6	37	42	"Corrected" date of flight according to RCO (DDMMYY)	X	X	X	X
11	4	43	46	"Corrected" time of departure/entry into charges region according to RCO (HHmm)	X	X	X	X
12	4	47	50	"Corrected" aerodrome of departure according to RCO	X	X	X	
13	4	51	54	"Corrected" aerodrome of destination according to RCO	X	X	X	
14	9	55	63	"Corrected" flight identification according to RCO	X	X	X	X
15	1	64	64	"Corrected" exempt. code: S = State Flight ; R = Search and rescue flights by a competent SAR body ; N = Testing of equipm. used as ground aids to air navig. ; E = Test flights excl. to obtain/renew/maintain COA or COE M = Military flight of Member State ; X = Military flight of a non-Member State T = Training ; V = Visual Flight rules ; Y = Mixed VFR/IFR H = Humanitarian and P = Police and custom	X	X	X	X
16	7	65	71	"Corrected" aircraft type according to RCO	X	X	X	X
17	9	72	80	"Confirmed" flight identification as billed	X	X	X	X
18	9	81	89	"Confirmed" aircraft registration markings corresp. to aircraft type billed	X	X	X	X
19	6	90	95	"Confirmed" ATD from billed airport of departure (DDHHmm)	X	X	X	X
20	4	96	99	"Confirmed" aerodrome of departure as billed	X	X	X	X
21	6	100	105	"Confirmed" ATA at billed airport of arrival (DDHHmm)	X	X	X	X
22	4	106	109	"Confirmed" aerodrome of arrival as billed	X	X	X	X
23	6	110	115	"Confirmed" 1st ATO (DDHHmm)	X	X	X	X
24	5	116	120	"Confirmed" 1st (compulsory) reporting point (3 char.) or geographical point (5 char.)	X	X	X	X
25	6	121	126	"Confirmed" 2nd ATO (DDHHmm)	X	X	X	X
26	5	127	131	"Confirmed" 2nd (compulsory) reporting point (3 char.) or geographical point (5 char.)	X	X	X	X
27	1	132	132	"Confirmed" IFR daylight criterion : 1 = sunrise at airport of departure 2 = sunset at airport of departure 3 = sunset at airport of arrival 4 = sunrise at airport of arrival	X	X	X	X
28	4	133	136	"Confirmed" IFR sunrise/sunset time (HHmm)	X	X	X	X
29	1	137	137	"Confirmed" nature of IFR proof available : 1 = IFR FPL available 2 = IFR strip available 3 = Airport departure log avail. 4 = Airport arrival log available 5 = IFR FPL + strip available	X	X	X	X
30	7	138	144	"Confirmed" source of IFR proof : ICAO 4-letter indicator (4 characters) or ICAO 4-letter indicator and categ. of center in charge of FIR (3 characters - i.e. ZQZ or ZPZ)	X	X	X	X
31	1	145	145	"Confirmed" exemption rejection code: 1 = No "X" in field 8 of FPL and/or no relevant "RMK" in field 18 of FPL 2 = No relevant remarks detected on airport dep. log 3 = No relevant remarks detected on airport arr. log 4 = No relevant remarks detected on IFR flight progress strip	X	X	X	X
32	60	146	205	Remarks made by RCO (Max. 60 characters)	X	X	X	X

CLA (CLAIM) REPLY MESSAGE - EXTENDED FORMAT					Situation: 16-11-93	Printed: 8-01-08	Annex G5	
Transmission from the DTC to the CRCO								
Format : 50								
Length : 205 characters					CLAIM REASON CODE <b>14</b>			
					(Wrong Airport of Arrival)			
					Decision codes			
Field Number	Field Length	Position From To		FIELD NAME	A (ACP) obl. opt. forb.	C (QTA) obl. opt. forb.	M (CHG) obl. opt. forb.	R (CFM) obl. opt. forb.
1	1	1	1	Type of message ("Z" = CLA(im) reply message from RCO)	X	X	X	X
2	6	2	7	Date of flight as billed to user (DDMMYY)	X	X	X	X
3	6	8	13	CRCO reference : User number	X	X	X	X
4	6	14	19	CRCO reference : Pro-format line number	X	X	X	X
5	2	20	21	CRCO reference : CLA(im) serial number on flight	X	X	X	X
6	6	22	27	CRCO reference : Claim number	X	X	X	X
7	6	28	33	CLA reply date as generated by the RCO (DDMMYY)	X	X	X	X
8	2	34	35	Claim reason code proposed by RCO	X	X	X	X
9	1	36	36	Claim decision code proposed by RCO : A = ACP (claim accepted as per CLA request -i.e.cancelled or modified flight message) C = QTA (flight message to be cancelled for a reason different from CLA request) M = CHG (flight message to be modified for a reason different from CLA request) R = CFM (claim rejected/original flight message confirmed as correct)	X	X	X	X
10	6	37	42	"Corrected" date of flight according to RCO (DDMMYY)	X	X	X	X
11	4	43	46	"Corrected" time of departure/entry into charges region according to RCO (HHmm)	X	X	X	X
12	4	47	50	"Corrected" aerodrome of departure according to RCO	X	X	X	X
13	4	51	54	"Corrected" aerodrome of destination according to RCO	X	X	X	X
14	9	55	63	"Corrected" flight identification according to RCO	X	X	X	X
15	1	64	64	"Corrected" exempt. code: S = State Flight ; R = Search and rescue flights by a competent SAR body ; N = Testing of equipm. used as ground aids to air navig. ; E = Test flights excl. to obtain/renew/maintain COA or COE M = Military flight of Member State ; X = Military flight of a non-Member State T = Training ; V = Visual Flight rules ; Y = Mixed VFR/IFR H = Humanitarian and P = Police and custom	X	X	X	X
16	7	65	71	"Corrected" aircraft type according to RCO	X	X	X	X
17	9	72	80	"Confirmed" flight identification as billed	X	X	X	X
18	9	81	89	"Confirmed" aircraft registration markings corresp. to aircraft type billed	X	X	X	X
19	6	90	95	"Confirmed" ATD from billed airport of departure (DDHHmm)	X	X	X	X
20	4	96	99	"Confirmed" aerodrome of departure as billed	X	X	X	X
21	6	100	105	"Confirmed" ATA at billed airport of arrival (DDHHmm)	X	X	X	X
22	4	106	109	"Confirmed" aerodrome of arrival as billed	X	X	X	X
23	6	110	115	"Confirmed" 1st ATO (DDHHmm)	X	X	X	X
24	5	116	120	"Confirmed" 1st (compulsory) reporting point (3 char.) or geographical point (5 char.)	X	X	X	X
25	6	121	126	"Confirmed" 2nd ATO (DDHHmm)	X	X	X	X
26	5	127	131	"Confirmed" 2nd (compulsory) reporting point (3 char.) or geographical point (5 char.)	X	X	X	X
27	1	132	132	"Confirmed" IFR daylight criterion : 1 = sunrise at airport of departure 2 = sunset at airport of departure 3 = sunset at airport of arrival 4 = sunrise at airport of arrival	X	X	X	X
28	4	133	136	"Confirmed" IFR sunrise/sunset time (HHmm)	X	X	X	X
29	1	137	137	"Confirmed" nature of IFR proof available : 1 = IFR FPL available 2 = IFR strip available 3 = Airport departure log avail. 4 = Airport arrival log available 5 = IFR FPL + strip available	X	X	X	X
30	7	138	144	"Confirmed" source of IFR proof : ICAO 4-letter indicator (4 characters) or ICAO 4-letter indicator and categ. of center in charge of FIR (3 characters - i.e. ZQZ or ZPZ)	X	X	X	X
31	1	145	145	"Confirmed" exemption rejection code: 1 = No "X" in field 8 of FPL and/or no relevant "RMK" in field 18 of FPL 2 = No relevant remarks detected on airport dep. log 3 = No relevant remarks detected on airport arr. log 4 = No relevant remarks detected on IFR flight progress strip	X	X	X	X
32	60	146	205	Remarks made by RCO (Max. 60 characters)	X	X	X	X

CLA (CLAIM) REPLY MESSAGE - EXTENDED FORMAT					Situation: 20-06-96		Printed: 21-03-05		Annex G6	
Transmission from the DTC to the CRCO										
Format : 50										
Length : 205 characters					CLAIM REASON CODE 15					
Field Number	Field Length	Position		FIELD NAME	(VFR) Decision codes					
		From	To		A (ACP)	C (QTA)	M (CHG)	R (CFM)		
					obl. opt. forb.	obl. opt. forb.	obl. opt. forb.	obl. opt. forb.		
1	1	1	1	Type of message ("Z" = CLA(im) reply message from RCO )	X	X	X	X		
2	6	2	7	Date of flight as billed to user (DDMMYY)	X	X	X	X		
3	6	8	13	CRCO reference : User number	X	X	X	X		
4	6	14	19	CRCO reference : Pro-forma line number	X	X	X	X		
5	2	20	21	CRCO reference : CLA(im) serial number on flight	X	X	X	X		
6	6	22	27	CRCO reference : Claim number	X	X	X	X		
7	6	28	33	CLA reply date as generated by the RCO (DDMMYY)	X	X	X	X		
8	2	34	35	Claim reason code proposed by RCO	X	X	X	X		
9	1	36	36	Claim decision code proposed by RCO : A = ACP (claim accepted as per CLA request -i.e.cancelled or modified flight message) C = QTA (flight message to be cancelled for a reason different from CLA request) M = CHG (flight message to be modified for a reason different from CLA request) R = CFM (claim rejected/original flight message confirmed as correct)	X	X	X	X		
10	6	37	42	"Corrected" date of flight according to RCO (DDMMYY)	X	X	X	X		
11	4	43	46	"Corrected" time of departure/entry into charges region according to RCO (HHmm)	X	X	X	X		
12	4	47	50	"Corrected" aerodrome of departure according to RCO	X	X	X	X		
13	4	51	54	"Corrected" aerodrome of destination according to RCO	X	X	X	X		
14	9	55	63	"Corrected" flight identification according to RCO	X	X	X	X		
15	1	64	64	"Corrected" exempt. code: S = State Flight ; R = Search and rescue flights by a competent SAR body ; N = Testing of equipm. used as ground aids to air navig. ; E = Test flights excl. to obtain/renew/maintain COA or COE M = Military flight of Member State ; X = Military flight of a non-Member State T = Training ; V = Visual Flight rules ; Y = Mixed VFR/IFR H = Humanitarian and P = Police and custom	X	X	X	X		
16	7	65	71	"Corrected" aircraft type according to RCO	X	X	X	X		
17	9	72	80	"Confirmed" flight identification as billed	X	X	X	X		
18	9	81	89	"Confirmed" aircraft registration markings corresp. to aircraft type billed	X	X	X	X		
19	6	90	95	"Confirmed" ATD from billed airport of departure (DDHHmm)	X	X	X	X		
20	4	96	99	"Confirmed" aerodrome of departure as billed	X	X	X	X		
21	6	100	105	"Confirmed" ATA at billed airport of arrival (DDHHmm)	X	X	X	X		
22	4	106	109	"Confirmed" aerodrome of arrival as billed	X	X	X	X		
23	6	110	115	"Confirmed" 1st ATO (DDHHmm)	X	X	X	X		
24	5	116	120	"Confirmed" 1st (compulsory) reporting point (3 char.) or geographical point (5 char.)	X	X	X	X		
25	6	121	126	"Confirmed" 2nd ATO (DDHHmm)	X	X	X	X		
26	5	127	131	"Confirmed" 2nd (compulsory) reporting point (3 char.) or geographical point (5 char.)	X	X	X	X		
27	1	132	132	"Confirmed" IFR daylight criterion : 1 = sunrise at airport of departure 2 = sunset at airport of departure 3= sunset at airport of arrival 4 = sunrise at airport of arrival	X	X	X	*X		
28	4	133	136	"Confirmed" IFR sunrise/sunset time (HHmm)	X	X	X	*X		
29	1	137	137	"Confirmed" nature of IFR proof 1 = IFR FPL available available : 2 = IFR strip available 3 = Airport departure log avail. 4 = Airport arrival log available 5 = IFR FPL + strip available	X	X	X	*X		
30	7	138	144	"Confirmed" source of IFR proof : ICAO 4-letter indicator (4 characters) or ICAO 4-letter indicator and categ. of center in charge of FIR (3 characters - i.e. ZQZ or ZPZ)	X	X	X	*X		
31	1	145	145	"Confirmed" exemption rejection code: 1 = No "X" in field 8 of FPL and/or no relevant "RMK " in field 18 of FPL 2 = No relevant remarks detected on airport dep. log 3 = No relevant remarks detected on airport arr. log 4 = No relevant remarks detected on IFR flight progress strip	X	X	X	X		
32	60	146	205	Remarks made by RCO (Max. 60 characters)	X	X	X	*X		

\* Please refer to Annex H-2 for further details on confirmation elements required.



CLA (CLAIM) REPLY MESSAGE - EXTENDED FORMAT					Situation: 16-11-93	Printed: 7-05-08	Annex G7	
Transmission from the DTC to the CRCO								
Format : 50								
Length : 205 characters					CLAIM REASON CODE <b>16</b>			
					(Training)			
					Decision codes			
Field Number	Field Length	Position From To		FIELD NAME	A (ACP) obl. opt. forb.	C (QTA) obl. opt. forb.	M (CHG) obl. opt. forb.	R (CFM) obl. opt. forb.
1	1	1	1	Type of message ("Z" = CLA(im) reply message from RCO)	X	X	X	X
2	6	2	7	Date of flight as billed to user (DDMMYY)	X	X	X	X
3	6	8	13	CRCO reference : User number	X	X	X	X
4	6	14	19	CRCO reference : Pro-forma line number	X	X	X	X
5	2	20	21	CRCO reference : CLA(im) serial number on flight	X	X	X	X
6	6	22	27	CRCO reference : Claim number	X	X	X	X
7	6	28	33	CLA reply date as generated by the RCO (DDMMYY)	X	X	X	X
8	2	34	35	Claim reason code proposed by RCO	X	X	X	X
9	1	36	36	Claim decision code proposed by RCO : A = ACP (claim accepted as per CLA request - i.e. cancelled or modified flight message) C = QTA (flight message to be cancelled for a reason different from CLA request) M = CHG (flight message to be modified for a reason different from CLA request) R = CFM (claim rejected/original flight message confirmed as correct)	X	X	X	X
10	6	37	42	"Corrected" date of flight according to RCO (DDMMYY)	X	X	X	X
11	4	43	46	"Corrected" time of departure/entry into charges region according to RCO (HHmm)	X	X	X	X
12	4	47	50	"Corrected" aerodrome of departure according to RCO	X	X	X	X
13	4	51	54	"Corrected" aerodrome of destination according to RCO	X	X	X	X
14	9	55	63	"Corrected" flight identification according to RCO	X	X	X	X
15	1	64	64	"Corrected" exempt. code: T = Training	X	X	X	X
16	7	65	71	"Corrected" aircraft type according to RCO	X	X	X	X
17	9	72	80	"Confirmed" flight identification as billed	X	X	X	X
18	9	81	89	"Confirmed" aircraft registration markings corresp. to aircraft type billed	X	X	X	X
19	6	90	95	"Confirmed" AID from billed airport of departure (DDHHmm)	X	X	X	X
20	4	96	99	"Confirmed" aerodrome of departure as billed	X	X	X	X
21	6	100	105	"Confirmed" ATA at billed airport of arrival (DDHHmm)	X	X	X	X
22	4	106	109	"Confirmed" aerodrome of arrival as billed	X	X	X	X
23	6	110	115	"Confirmed" 1st ATO (DDHHmm)	X	X	X	X
24	5	116	120	"Confirmed" 1st (compulsory) reporting point (3 char.) or geographical point (5 char.)	X	X	X	X
25	6	121	126	"Confirmed" 2nd ATO (DDHHmm)	X	X	X	X
26	5	127	131	"Confirmed" 2nd (compulsory) reporting point (3 char.) or geographical point (5 char.)	X	X	X	X
27	1	132	132	"Confirmed" IFR daylight criterion : 1 = sunrise at airport of departure 2 = sunset at airport of departure 3 = sunset at airport of arrival 4 = sunrise at airport of arrival	X	X	X	X
28	4	133	136	"Confirmed" IFR sunrise/sunset time (HHmm)	X	X	X	X
29	1	137	137	"Confirmed" nature of IFR proof available : 1 = IFR FPL available 2 = IFR strip available 3 = Airport departure log avail. 4 = Airport arrival log available 5 = IFR FPL + strip available	X	X	X	X
30	7	138	144	"Confirmed" source of IFR proof : ICAO 4-letter indicator (4 characters) or ICAO 4-letter indicator and categ. of center in charge of FIR (3 characters - i.e. ZQZ or ZPZ)	X	X	X	X
31	1	145	145	"Confirmed" exemption rejection code: 1 = No "X" in field 8 of FPL and/or no relevant "RMK" in field 18 of FPL 2 = No relevant remarks detected on airport dep. log 3 = No relevant remarks detected on airport arr. log 4 = No relevant remarks detected on IFR flight progress strip	X	X	X	X
32	60	146	205	Remarks made by RCO (Max. 60 characters)	X	X	X	X

CLA (CLAIM) REPLY MESSAGE - EXTENDED FORMAT					Situation: 16-11-93		Printed: 7-05-08		Annex G8	
Transmission from the DTC to the CRCO										
Format : 50										
Length : 205 characters					CLAIM REASON CODE 18					
					(Other Exemptions)					
					Decision codes					
Field Number	Field Length	Position		FIELD NAME	A (ACP)	C (QTA)	M (CHG)	R (CFM)		
		From	To		obl. opt. forb.	obl. opt. forb.	obl. opt. forb.	obl. opt. forb.		
1	1	1	1	Type of message ("Z" = CLA(im) reply message from RCO )	X		X	X	X	
2	6	2	7	Date of flight as billed to user (DDMMYY)	X		X	X	X	
3	6	8	13	CRCO reference : User number	X		X	X	X	
4	6	14	19	CRCO reference : Pro-forma line number	X		X	X	X	
5	2	20	21	CRCO reference : CLA(im) serial number on flight	X		X	X	X	
6	6	22	27	CRCO reference : Claim number	X		X	X	X	
7	6	28	33	CLA reply date as generated by the RCO (DDMMYY)	X		X	X	X	
8	2	34	35	Claim reason code proposed by RCO	X		X	X	X	
9	1	36	36	Claim decision code proposed by RCO : A = ACP (claim accepted as per CLA request -i.e.cancelled or modified flight message) C = QTA (flight message to be cancelled for a reason different from CLA request) M = CHG (flight message to be modified for a reason different from CLA request) R = CFM (claim rejected/original flight message confirmed as correct)	X		X	X	X	
10	6	37	42	"Corrected" date of flight according to RCO (DDMMYY)		X		X	X	
11	4	43	46	"Corrected" time of departure/entry into charges region according to RCO (HHmm)		X		X	X	
12	4	47	50	"Corrected" aerodrome of departure according to RCO		X		X	X	
13	4	51	54	"Corrected" aerodrome of destination according to RCO		X		X	X	
14	9	55	63	"Corrected" flight identification according to RCO		X		X	X	
15	1	64	64	"Corrected" exempt. code: S = State Flight ; R = Search and rescue flights by a competent SAR body ; N = Testing of equipm. used as ground aids to air navig. ; E = Test flights excl. to obtain/renew/maintain COA or COE M = Military flight of Member State ; X = Military flight of a non-Member State H = Humanitarian and P = Police and custom		X		X	X	
16	7	65	71	"Corrected" aircraft type according to RCO		X		X	X	
17	9	72	80	"Confirmed" flight identification as billed		X		X	X	
18	9	81	89	"Confirmed" aircraft registration markings corresp. to aircraft type billed		X		X	X	
19	6	90	95	"Confirmed" ATD from billed airport of departure (DDHHmm)		X		X	X	
20	4	96	99	"Confirmed" aerodrome of departure as billed		X		X	X	
21	6	100	105	"Confirmed" ATA at billed airport of arrival (DDHHmm)		X		X	X	
22	4	106	109	"Confirmed" aerodrome of arrival as billed		X		X	X	
23	6	110	115	"Confirmed" 1st ATO (DDHHmm)		X		X	X	
24	5	116	120	"Confirmed" 1st (compulsory) reporting point (3 char.) or geographical point (5 char.)		X		X	X	
25	6	121	126	"Confirmed" 2nd ATO (DDHHmm)		X		X	X	
26	5	127	131	"Confirmed" 2nd (compulsory) reporting point (3 char.) or geographical point (5 char.)		X		X	X	
27	1	132	132	"Confirmed" IFR daylight criterion : 1 = sunrise at airport of departure 2 = sunset at airport of departure 3= sunset at airport of arrival 4 = sunrise at airport of arrival		X		X	X	
28	4	133	136	"Confirmed" IFR sunrise/sunset time (HHmm)		X		X	X	
29	1	137	137	"Confirmed" nature of IFR proof 1 = IFR FPL available available : 2 = IFR strip available 3 = Airport departure log avail. 4 = Airport arrival log available 5 = IFR FPL + strip available		X		X	X	
30	7	138	144	"Confirmed" source of IFR proof : ICAO 4-letter indicator (4 characters) or ICAO 4-letter indicator and categ. of center in charge of FIR (3 characters - i.e. ZQZ or ZPZ)		X		X	X	
31	1	145	145	"Confirmed" exemption rejection code: 1 = No "X" in field 8 of FPL and/or no relevant "RMK " in field 18 of FPL 2 = No relevant remarks detected on airport dep. log 3 = No relevant remarks detected on airport arr. log 4 = No relevant remarks detected on IFR flight progress strip		X		X	X	
32	60	146	205	Remarks made by RCO (Max. 60 characters)		X		X	X	

CLA (CLAIM) REPLY MESSAGE - EXTENDED FORMAT					Situation: 20-06-96		Printed: 9-01-08		Annex G9	
Transmission from the DTC to the CRCO										
Format : 50										
Length : 205 characters					CLAIM REASON CODE 40					
					(Duplicate Billing)					
					Decision codes					
					A (ACP)		C (QTA)		M (CHG)	
					R (CFM)					
					obl. opt. forb.		obl. opt. forb.		obl. opt. forb.	
					obl. opt. forb.		obl. opt. forb.		obl. opt. forb.	
Field Number	Field Length	Position		FIELD NAME						
		From	To							
1	1	1	1	Type of message ("Z" = CLA(im) reply message from RCO )	X	X		X	X	
2	6	2	7	Date of flight as billed to user (DDMMYY)	X	X		X	X	
3	6	8	13	CRCO reference : User number	X	X		X	X	
4	6	14	19	CRCO reference : Pro-forma line number	X	X		X	X	
5	2	20	21	CRCO reference : CLA(im) serial number on flight	X	X		X	X	
6	6	22	27	CRCO reference : Claim number	X	X		X	X	
7	6	28	33	CLA reply date as generated by the RCO (DDMMYY)	X	X		X	X	
8	2	34	35	Claim reason code proposed by RCO	X	X		X	X	
9	1	36	36	Claim decision code proposed by RCO : A = ACP (claim accepted as per CLA request -i.e.cancelled or modified flight message) C = QTA (flight message to be cancelled for a reason different from CLA request) M = CHG (flight message to be modified for a reason different from CLA request) R = CFM (claim rejected/original flight message confirmed as correct)	X	X		X	X	
10	6	37	42	"Corrected" date of flight according to RCO (DDMMYY)	X	X		X	X	
11	4	43	46	"Corrected" time of departure/entry into charges region according to RCO (HHmm)	X	X		X	X	
12	4	47	50	"Corrected" aerodrome of departure according to RCO	X	X		X	X	
13	4	51	54	"Corrected" aerodrome of destination according to RCO	X	X		X	X	
14	9	55	63	"Corrected" flight identification according to RCO	X	X		X	X	
15	1	64	64	"Corrected" exempt. code: S = State Flight ; R = Search and rescue flights by a competent SAR body ; N = Testing of equipm. used as ground aids to air navig. ; E = Test flights excl. to obtain/renew/maintain COA or COE M = Military flight of Member State ; X = Military flight of a non-Member State T = Training ; V = Visual Flight rules ; Y = Mixed VFR/IFR H = Humanitarian and P = Police and custom	X	X		X	X	
16	7	65	71	"Corrected" aircraft type according to RCO	X	X		X	X	
17	9	72	80	"Confirmed" flight identification as billed	X	X		X	*X	
18	9	81	89	"Confirmed" aircraft registration markings corresp. to aircraft type billed	X	X		X	*X	
19	6	90	95	"Confirmed" ATD from billed airport of departure (DDHHmm)	X	X		X	*X	
20	4	96	99	"Confirmed" aerodrome of departure as billed	X	X		X	*X	
21	6	100	105	"Confirmed" ATA at billed airport of arrival (DDHHmm)	X	X		X	*X	
22	4	106	109	"Confirmed" aerodrome of arrival as billed	X	X		X	*X	
23	6	110	115	"Confirmed" 1st ATO (DDHHmm)	X	X		X	*X	
24	5	116	120	"Confirmed" 1st (compulsory) reporting point (3 char.) or geographical point (5 char.)	X	X		X	*X	
25	6	121	126	"Confirmed" 2nd ATO (DDHHmm)	X	X		X	*X	
26	5	127	131	"Confirmed" 2nd (compulsory) reporting point (3 char.) or geographical point (5 char.)	X	X		X	*X	
27	1	132	132	"Confirmed" IFR daylight criterion : 1 = sunrise at airport of departure 2 = sunset at airport of departure 3 = sunset at airport of arrival 4 = sunrise at airport of arrival	X	X		X	X	
28	4	133	136	"Confirmed" IFR sunrise/sunset time (HHmm)	X	X		X	X	
29	1	137	137	"Confirmed" nature of IFR proof available : 1 = IFR FPL available 2 = IFR strip available 3 = Airport departure log avail. 4 = Airport arrival log available 5 = IFR FPL + strip available	X	X		X	X	
30	7	138	144	"Confirmed" source of IFR proof : ICAO 4-letter indicator (4 characters) or ICAO 4-letter indicator and categ. of center in charge of FIR (3 characters - i.e. ZQZ or ZPZ)	X	X		X	X	
31	1	145	145	"Confirmed" exemption rejection code: 1 = No "X" in field 8 of FPL and/or no relevant "RMK " in field 18 of FPL 2 = No relevant remarks detected on airport dep. log 3 = No relevant remarks detected on airport arr. log 4 = No relevant remarks detected on IFR flight progress strip	X	X		X	X	
32	60	146	205	Remarks made by RCO (Max. 60 characters)	X	X		X	*X	

\* Please refer to Annex H-3 for further details on confirmation elements required.

CLA (CLAIM) REPLY MESSAGE - EXTENDED FORMAT					Situation: 20-06-96		Printed: 9-01-08		Annex G10	
Transmission from the DTC to the CRCO										
Format : 50										
Length : 205 characters										
					CLAIM REASON CODE 99					
					(Other Claim)					
					Decision codes					
Field Number	Field Length	Position		FIELD NAME	A (ACP)	C (QTA)	M (CHG)	R (CFM)		
		From	To		obl. opt. forb.	obl. opt. forb.	obl. opt. forb.	obl. opt. forb.		
1	1	1	1	Type of message ("Z" = CLA(im) reply message from RCO )	X	X	X	X		
2	6	2	7	Date of flight as billed to user (DDMMYY)	X	X	X	X		
3	6	8	13	CRCO reference : User number	X	X	X	X		
4	6	14	19	CRCO reference : Pro-forma line number	X	X	X	X		
5	2	20	21	CRCO reference : CLA(im) serial number on flight	X	X	X	X		
6	6	22	27	CRCO reference : Claim number	X	X	X	X		
7	6	28	33	CLA reply date as generated by the RCO (DDMMYY)	X	X	X	X		
8	2	34	35	Claim reason code proposed by RCO	X	X	X	X		
9	1	36	36	Claim decision code proposed by RCO : A = ACP (claim accepted as per CLA request -i.e.cancelled or modified flight message) C = QTA (flight message to be cancelled for a reason different from CLA request) M = CHG (flight message to be modified for a reason different from CLA request) R = CFM (claim rejected/original flight message confirmed as correct)	X	X	X	X		
10	6	37	42	"Corrected" date of flight according to RCO (DDMMYY)	X	X	X	X		
11	4	43	46	"Corrected" time of departure/entry into charges region according to RCO (HHmm)	X	X	X	X		
12	4	47	50	"Corrected" aerodrome of departure according to RCO	X	X	X	X		
13	4	51	54	"Corrected" aerodrome of destination according to RCO	X	X	X	X		
14	9	55	63	"Corrected" flight identification according to RCO	X	X	X	X		
15	1	64	64	"Corrected" exempt. code: S = State Flight ; R = Search and rescue flights by a competent SAR body ; N = Testing of equipm. used as ground aids to air navig. ; E = Test flights excl. to obtain/renew/maintain COA or COE M = Military flight of Member State ; X = Military flight of a non-Member State T = Training ; V = Visual Flight rules ; Y = Mixed VFR/IFR H = Humanitarian and P = Police and custom	X	X	X	X		
16	7	65	71	"Corrected" aircraft type according to RCO	X	X	X	X		
17	9	72	80	"Confirmed" flight identification as billed	X	X	X	X*		
18	9	81	89	"Confirmed" aircraft registration markings corresp. to aircraft type billed	X	X	X	X*		
19	6	90	95	"Confirmed" ATD from billed airport of departure (DDHHmm)	X	X	X	X*		
20	4	96	99	"Confirmed" aerodrome of departure as billed	X	X	X	X*		
21	6	100	105	"Confirmed" ATA at billed airport of arrival (DDHHmm)	X	X	X	X*		
22	4	106	109	"Confirmed" aerodrome of arrival as billed	X	X	X	X*		
23	6	110	115	"Confirmed" 1st ATO (DDHHmm)	X	X	X	X*		
24	5	116	120	"Confirmed" 1st (compulsory) reporting point (3 char.) or geographical point (5 char.)	X	X	X	X*		
25	6	121	126	"Confirmed" 2nd ATO (DDHHmm)	X	X	X	X*		
26	5	127	131	"Confirmed" 2nd (compulsory) reporting point (3 char.) or geographical point (5 char.)	X	X	X	X*		
27	1	132	132	"Confirmed" IFR daylight criterion : 1 = sunrise at airport of departure 2 = sunset at airport of departure 3= sunset at airport of arrival 4 = sunrise at airport of arrival	X	X	X	X*		
28	4	133	136	"Confirmed" IFR sunrise/sunset time (HHmm)	X	X	X	X*		
29	1	137	137	"Confirmed" nature of IFR proof available : 1 = IFR FPL available 2 = IFR strip available 3 = Airport departure log avail. 4 = Airport arrival log available 5 = IFR FPL + strip available	X	X	X	X*		
30	7	138	144	"Confirmed" source of IFR proof : ICAO 4-letter indicator (4 characters) or ICAO 4-letter indicator and categ. of center in charge of FIR (3 characters - i.e. ZQZ or ZPZ)	X	X	X	X*		
31	1	145	145	"Confirmed" exemption rejection code: 1 = No "X" in field 8 of FPL and/or no relevant "RMK " in field 18 of FPL 2 = No relevant remarks detected on airport dep. log 3 = No relevant remarks detected on airport arr. log 4 = No relevant remarks detected on IFR flight progress strip	X	X	X	X*		
32	60	146	205	Remarks made by RCO (Max. 60 characters)	X	X	X	X*		

\* Please refer to Annex H-3 for further details on confirmation elements required.

**ANNEX H. CLA(im) replies – action required by RCOs**

## Annex H-1

CLAIM REASON CODES as per CRCO CLA request and/or CLA REPLY of RCO		CLA(im) REPLIES - ACTION REQUIRED BY RCOs		
C O D E	MEANING OF CODES	DECISION CODES		ADDITIONAL PARTICULARS TO BE PROVIDED BY RCOs (Confirmation /correcting message elements and remarks)
		Message format (1 char.)	Listing format (3 char.)	
10	Cancelled flight	A	ACP	No further information required.
		C	QTA	This decision code should only be used if the claim reason code given in the CLA reply (i.e. 10) is different from that provided by the CRCO in the CLA request; in such cases a REMARK is obligatory.
		M	CHG	NOT POSSIBLE FOR THIS CLAIM REASON CODE.
		R	CFM	The aircraft reg. or flight id. PLUS either the ATD/ATO, ATD/ATA, ATO/ATO, ATO/ATA is obligatory. If an ATO is given, the corresponding geographical/reporting point must also be given. Any relevant info. from field 18 of the FPL (see ICAO Doc. 4444) should be given as a REMARK.
11	Flight unknown to the user	A	ACP	NOT POSSIBLE FOR THIS CLAIM REASON CODE as further analysis by the CRCO is required.
		C	QTA	In such cases a REMARK is obligatory.
		M	CHG	Either the corrected date, time or flight identification is obligatory.
		R	CFM	The aircraft reg. PLUS either the ATD/ATO, ATD/ATA, ATO/ATO, ATO/ATA is obligatory. If an ATO is given, the corresponding geographical/reporting point must also be given. Any relevant info. from field 18 of the FPL (see ICAO Doc. 4444) should be given as a REMARK.
12	Wrong aircraft type	A	ACP	No further information required.
		C	QTA	NOT POSSIBLE FOR THIS CLAIM REASON CODE
		M	CHG	Correct aircraft type if it is different from that claimed by the user or if the claim reason code in the CLA reply (i.e. 12) is different from that provided by the CRCO in the CLA request. The aircraft registration should be given as a REMARK if available.
		R	CFM	In such cases, the aircraft registration is obligatory.
13	Wrong aerodrome of departure	A	ACP	No further information required.
		C	QTA	NOT POSSIBLE FOR THIS CLAIM REASON CODE.
		M	CHG	Correct aerodrome of departure if different from that claimed by the user or if the claim reason code in the CLA reply (i.e. 13) is different from that provided by the CRCO in the CLA request. Either the ATD/ATO, ATD/ATA, ATO/ATO or ATO/ATA should be given as a remark if available. If an ATO is given, the corresponding geographical/reporting point must also be given.
		R	CFM	The ATD and aerodrome of destination (outbound for ...) are obligatory.

## Annex H-2

CLAIM REASON CODES as per CRCO CLA request and/or CLA REPLY of RCO		CLA(im) REPLIES - ACTION REQUIRED BY RCOs	
C O D E	MEANING OF CODES	DECISION CODES	ADDITIONAL PARTICULARS TO BE PROVIDED BY RCOs (Confirmation/correcting message elements and remarks)
		Message format (1 char.)	
		Listing format (3 char.)	
14	Wrong aerodrome of arrival	A ACP	No further information required.
		C QTA	NOT POSSIBLE FOR THIS CLAIM REASON CODE.
		M CHG	Correct aerodrome of arrival if different from that claimed by the user or if the claim reason code in the CLA reply (i.e. 14) is different from that provided by the CRCO in the CLA request. Either the ATD/ATO, ATD/ATA, ATO/ATO or ATO/ATA should be given as a remark if available. If an ATO is given, the corresponding geographical/reporting point must also be given.
		R CFM	The ATA and aerodrome of departure (inbound from ...) are obligatory.
15	VFR flight	A ACP	No further information required.
		C QTA	This decision code should only be used if the claim reason code given in the CLA reply (i.e. 15) is different from that provided by the CRCO in the CLA request. In such cases, a REMARK is obligatory.
		M CHG	NOT POSSIBLE FOR THIS CLAIM REASON CODE.
		R CFM	IFR confirmation elements which must be nature of proof PLUS source of proof or IFR daylight criterion PLUS sunset/sunrise times (for TX/PX only). Additional information should be provided as a REMARK.
16	Training flight	A ACP	No further information required.
		C QTA	NOT POSSIBLE FOR THIS CLAIM REASON CODE.
		M CHG	This decision code should only be used if the claim reason code given in the CLA reply (i.e. 16) is different from that provided by the CRCO in the CLA request. In such a case, the correct exemption code T and a REMARK are obligatory.
		R CFM	Provide primary source of information used for decision making (exemption rejection code). Any additional elements or relevant information should be shown as a REMARK.

## Annex H-3

CLAIM REASON CODES as per CRCO CLA request and/or CLA REPLY of RCO		CLA(im) REPLIES - ACTION REQUIRED BY RCOs		
C O D E	MEANING OF CODES	DECISION CODES		ADDITIONAL PARTICULARS TO BE PROVIDED BY RCOs (Confirmation / correcting message elements and remarks)
		Message format (1 char.)	Listing format (3 char.)	
18	Other exemptions	A	ACP	No further information required.
		C	QTA	NOT POSSIBLE FOR THIS CLAIM REASON CODE.
		M	CHG	This decision code should only be used if the claim reason code given in the CLA reply (i.e. 18) is different from that provided by the CRCO in the CLA request. In such a case, the correct exemption code "S", "R", "N", "M" or "X", and a REMARK are obligatory.
		R	CFM	Provide primary source of information used for decision making (exemption rejection code). Any additional elements or relevant information should be shown as a REMARK.
40	Duplicate billing	A	ACP	No further information required.
		C	QTA	This decision code should only be used if the claim reason code given in the CLA reply (i.e. 40) is different from that provided by the CRCO in the CLA request. In such cases, a REMARK, showing the sequence number of the correct flight is obligatory.
		M	CHG	NOT POSSIBLE FOR THIS CLAIM REASON CODE.
		R	CFM	The aircraft registration or flight id. and at least one of the following confirmation pairings is obligatory FOR BOTH FLIGHTS SHOWN (the first to be entered in relevant fields and the second to be entered as a REMARK): ATD/ATO, ATD/ATA, ATO/ATO or ATO/ATA. If an ATO is given, the corresponding geographical/reporting point must also be given. Any additional elements or relevant information should be entered as a REMARK.
99	Miscellaneous/multiple claim reasons	A	ACP	NOT POSSIBLE FOR THIS CLAIM REASON CODE.
		C	QTA	In this case a REMARK is obligatory.
		M	CHG	At least one relevant corrective element is obligatory.
		R	CFM	At least one relevant confirmation element is obligatory.



**ANNEX I. DTC Identification codes**

EB	BELGIUM
ED	GERMANY
EF	FINLAND
EG	UNITED KINGDOM
EH	NETHERLANDS
EI	IRELAND
EK	DENMARK
EN	NORWAY
EP	POLAND
ES	SWEDEN
EY	LITHUANIA
LA	ALBANIA
LB	BULGARIA
LC	CYPRUS
LD	CROATIA
LE	SPAIN
LF	FRANCE
LG	GREECE
LH	HUNGARY
LI	ITALY
LJ	SLOVENIA
LK	CZECH REPUBLIC
LM	MALTA
LO	AUSTRIA
LP	PORTUGAL
LQ	BOSNIA/HERZEGOVINA
LR	ROMANIA
LS	SWITZERLAND
LT	TURKEY
LU	MOLDOVA
LW	F.Y.R.O.M.
LZ	SLOVAK REPUBLIC
UD	ARMENIA
UK	UKRAINE

## **ANNEX J. Browser option: detailed functions**

In the DEBI application, the URL to be used for the Browser option is <https://debi.crco.eurocontrol.int>.

### **1. The DTC Environment**

The DTC needs an Internet Provider and a browser. Any browser accepting client certificate should normally work. Internet Explorer (since version 5) and Firefox (since 1.01) have been tested and work fine.

### **2. Functions available in DEBI – option browser –**

In the DEBI browser, the different functions available are:

- The Logon Page : After certificate installation, the first window asks to enter a password. The password is a mixture of letters and digits. The account will be locked after 5 bad entries of password. There is an automatic logout after 5 minutes of inactivity.

- Consult a home page : In this page, you have the last login date, certification expiration date, number of cor/cla file to receive, number of cor/cla archives to receive ( already downloaded), the number of days available for log files and cor/cla archives and links to other DEBI functions, Eurocontrol websites and contacts.

- Send DTC files (Message and Cla replies) : By choosing the appropriate bullet (Msg or Rep cla), you will have the possibility to send 6 files (messages or Cla Replies) at the same time.

The data to be uploaded must be an ASCII text file respecting the predefined format  
The data could be :

1. [Msg ] Flight message and correction of flight message
2. [Rep Cla] Replies to claim requests

Msg	<input type="radio"/>	Rep Cla	<input type="radio"/>		Browse...
Msg	<input type="radio"/>	Rep Cla	<input type="radio"/>		Browse...
Msg	<input type="radio"/>	Rep Cla	<input type="radio"/>		Browse...
Msg	<input type="radio"/>	Rep Cla	<input type="radio"/>		Browse...
Msg	<input type="radio"/>	Rep Cla	<input type="radio"/>		Browse...
Msg	<input type="radio"/>	Rep Cla	<input type="radio"/>		Browse...

Send

EUROCONTROL Web Site | [Contacts](#) | [Logout](#) |  
Send comments and questions on this page to Content Supplier: [webmaster@eurocontrol.int](mailto:webmaster@eurocontrol.int)  
© 2004 EUROCONTROL

- Receive COR/CLA files from CRCO : In this page, you have the COR ( R files) and CLA (C-files) waiting to be downloaded. When these files are downloaded, they are automatically copied to COR/CLA archive TAB.

The data to be Received is an ASCII text file respecting the predefined format  
The data could be :

1. [Cor] request message (R-XX-YYYYMMDD-HHMMSS.TXT)
2. [Cla] request message (C-XX-YYYYMMDD-HHMMSS.TXT)

**You have 3 File(s) at your disposal, Select One and Click on Receive**

- ☒ C-RCO\_EB-20040408-085702.bt
- ☐ C-RCO\_EB-20040331-152926.bt
- ☐ C-RCO\_EB-20040324-155712.bt

Receive

EUROCONTROL Web Site | [Contacts](#) | [Logout](#) |  
Send comments and questions on this page to Content Supplier: [webmaster@eurocontrol.int](mailto:webmaster@eurocontrol.int)  
© 2004 EUROCONTROL

- COR/CLA Archive : In this page, you have the COR ( R files) and CLA (C-files) already downloaded. These files can be downloaded again during 30 days.

The archived COR/CLA files are ASCII text file matching the predefined format  
The data is available during 15 days

1. Archived [Cor] request message (ARC-R-XX-YYYYMMDD-HHMMSS.TXT)
2. Archived [Cla] request message (ARC-C-XX-YYYYMMDD-HHMMSS.TXT)

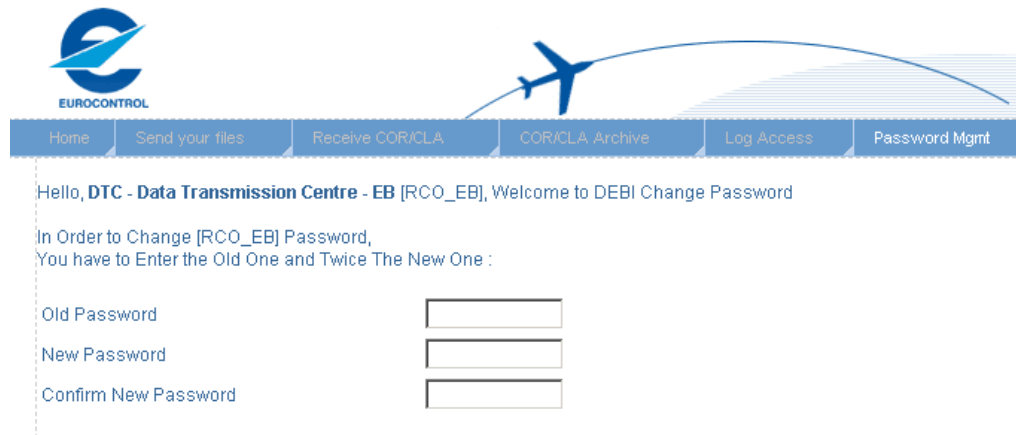
**You have 1 File(s) at your disposal, Select One and Click On Receive**

- ☒ ARC-C-PDE-20040324-155712.bt

Receive

EUROCONTROL Web Site | [Contacts](#) | [Logout](#) |  
Send comments and questions on this page to Content Supplier: [webmaster@eurocontrol.int](mailto:webmaster@eurocontrol.int)  
© 2004 EUROCONTROL

- **Change of password:** This page offers the possibility to change the transmission password. The password must be a mixed of letters and digits, with a minimum length of 6 char and a maximum of 12 char.



Home Send your files Receive COR/CLA COR/CLA Archive Log Access Password Mgmt

Hello, DTC - Data Transmission Centre - EB [RCO\_EB], Welcome to DEBI Change Password

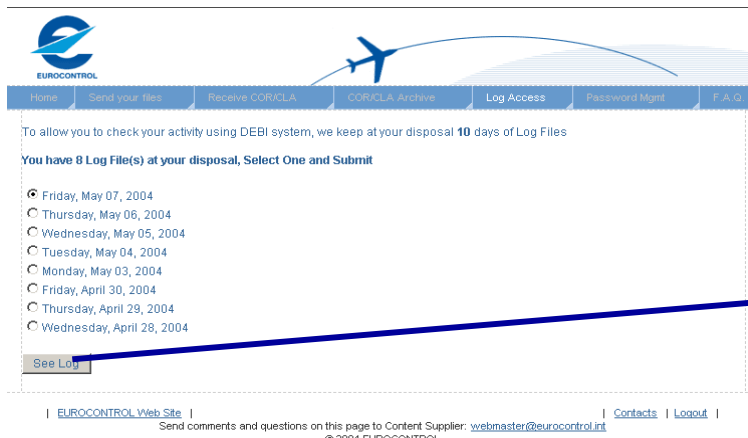
In Order to Change [RCO\_EB] Password,  
You have to Enter the Old One and Twice The New One :

Old Password

New Password

Confirm New Password

- **Consult last 30 days of log files:** Those pages present per day, all the log files of the last 30 days. All operations are logged in the log files.



Home Send your files Receive COR/CLA COR/CLA Archive Log Access Password Mgmt F.A.Q.

To allow you to check your activity using DEBI system, we keep at your disposal **10** days of Log Files

You have **8** Log File(s) at your disposal, Select One and Submit

Friday, May 07, 2004  
Thursday, May 06, 2004  
Wednesday, May 05, 2004  
Tuesday, May 04, 2004  
Monday, May 03, 2004  
Friday, April 30, 2004  
Thursday, April 29, 2004  
Wednesday, April 28, 2004

See Log

EUROCONTROL Web Site | Send comments and questions on this page to Content Supplier: [webmaster@eurocontrol.int](mailto:webmaster@eurocontrol.int) | [Contacts](#) | [Logout](#) |



Home Send your files Receive COR/CLA COR/CLA Archive Log Access Password Mgmt F.A.Q.

Log File Of Wednesday, April 28, 2004 :

09:34:06 [LOGIN] RCO\_EB Logged Out From 193.221.173.218  
09:47:26 [LOGIN] RCO\_EB Logged in With Certificate 24-7f-a0-9c-00-00-00-00-3e From 193.221.173.88  
11:24:06 [LOGIN] RCO\_EB Logged Out From 193.221.173.88  
12:56:00 [LOGIN] RCO\_EB Logged in With Certificate 24-7f-a0-9c-00-00-00-00-3e From 193.221.173.88  
13:07:07 [LOGIN] RCO\_EB Logged Out From 193.221.173.88  
13:07:48 [LOGIN] RCO\_EB Logged in With Certificate 24-7f-a0-9c-00-00-00-00-3e From 193.221.173.218  
13:15:57 [LOGIN] RCO\_EB Logged in With Certificate 24-7f-a0-9c-00-00-00-00-3e From 193.221.173.88  
13:21:07 [LOGIN] RCO\_EB Logged Out From 193.221.173.218  
13:22:01 [LOGIN] RCO\_EB Logged in With Certificate 24-7f-a0-9c-00-00-00-00-3e From 193.221.173.88  
13:41:18 [LOGIN] RCO\_EB Logged in With Certificate 24-7f-a0-9c-00-00-00-00-3e From 193.221.173.88  
13:42:20 [LOGIN] RCO\_EB Logged Out From 193.221.173.88  
13:42:26 [LOGIN] RCO\_EB Logged in With Certificate 24-7f-a0-9c-00-00-00-00-3e From 193.221.173.88  
13:43:52 [LOGIN] RCO\_EB Logged Out From 193.221.173.88  
13:44:58 [LOGIN] RCO\_EB Logged in With Certificate 24-7f-a0-9c-00-00-00-00-3e From 193.221.173.88  
13:45:38 [LOGIN] RCO\_EB Logged Out From 193.221.173.88 By Button Menu  
13:45:37 [LOGIN] RCO\_EB Logged in With Certificate 24-7f-a0-9c-00-00-00-00-3e From 193.221.173.88  
13:47:03 [LOGIN] RCO\_EB Logged in With Certificate 24-7f-a0-9c-00-00-00-00-3e From 193.221.173.88  
13:48:35 [SND] File [M-LG-040206-102659.txt] Successfully Received at CRCO as [M-RCO\_EB-20040428-134835-000.txt]  
13:48:35 [SND] File [M-RCO\_EB-20040428-134835-000.txt] Contains [0001.LG029290104NOR]  
13:50:16 [ARC] File [ARC-R-PDE-20040415-1142.txt] Not Downloaded From CRCO  
13:50:41 [GET] File [C-PDE-20040324-155712.txt] Successfully Downloaded From CRCO  
13:50:41 [GET] File [C-PDE-20040324-155712.txt] Transferred to Archive as [ARC-C-PDE-20040324-155712.txt]  
13:51:43 [LOGIN] RCO\_EB Logged Out From 193.221.173.88 By Button Menu  
13:56:53 [LOGIN] RCO\_EB Logged Out From 193.221.173.88 By TimeOut  
15:31:43 [LOGIN] RCO\_EB Logged in With Certificate 24-7f-a0-9c-00-00-00-00-3e From 193.221.173.88  
15:46:57 [LOGIN] RCO\_EB Logged Out From 193.221.173.88 By TimeOut  
16:28:30 [LOGIN] RCO\_EB Logged in With Certificate 24-7f-a0-9c-00-00-00-00-3e From 193.221.173.88  
16:39:54 [LOGIN] RCO\_EB Logged in With Certificate 24-7f-a0-9c-00-00-00-00-3e From 193.221.173.88  
16:45:58 [LOGIN] RCO\_EB Logged Out From 193.221.173.88 By TimeOut  
16:55:03 [LOGIN] RCO\_EB Logged in With Certificate 24-7f-a0-9c-00-00-00-00-3e From 193.221.173.88  
17:01:58 [LOGIN] RCO\_EB Logged Out From 193.221.173.88 By TimeOut  
17:13:58 [LOGIN] RCO\_EB Logged Out From 193.221.173.88 By TimeOut  
17:14:55 [LOGIN] RCO\_EB Logged in With Certificate 24-7f-a0-9c-00-00-00-00-3e From 193.221.173.88  
17:54:58 [LOGIN] RCO\_EB Logged Out From 193.221.173.88 By TimeOut

Back

EUROCONTROL Web Site | Send comments and questions on this page to Content Supplier: [webmaster@eurocontrol.int](mailto:webmaster@eurocontrol.int) | [Contacts](#) | [Logout](#) |

### 3. Request for a test using DEBI – option browser -

- a. The DTC requests to [debi.contacts@eurocontrol.int](mailto:debi.contacts@eurocontrol.int) to used DEBI – option browser. The CRCO will send back documentation, a test client certificate, a password for the installation of the certificate and a password for the connection.
- b. The DTC installs test client certificate (see annex E for details). The test client certificate is a \*.PFX file (example : EUROCONTROL-CRCO-DEBI-ED-TEST-2005.pfx.). This certificate is issued by Eurocontrol CRCO as Certification Authority and has a validity of one year. One month before expiration, the CRCO will send you a new certificate. The certificate establish if you are in test (test certificate) or in production (production certificate).
- c. The DTC launches the browser and enter the url <https://debi.crco.eurocontrol.int>, the connection will take place on port 443 – default https port – on CRCO web server. The server certificate will be exchanged on port 80. If you have a firewall or/and a proxy, this information should be entered.
- d. Based on the test certificate, the web server will automatically identified the DTC and ask for a password for the connection.
- e. When the password is entered, you are now connected and you receive the logon page.

The files exchanged with test certificate **will not be processed** and validated by the main system. If you want a validation of the content, you have to contact [debi.contacts@eurocontrol.int](mailto:debi.contacts@eurocontrol.int) or your usual CRCO R3B contact.

### 4. Request to move to DEBi production – option browser –

- a. The DTC requests to [debi.contacts@eurocontrol.int](mailto:debi.contacts@eurocontrol.int) to move to DEBI production option browser at a fixed date. The CRCO will send back production client certificate, a password for the installation of the certificate and a password for the connection.
- b. The DTC installs the production client certificate (example : EUROCONTROL-CRCO-DEBI-ED-2005.pfx.). The difference between test and production certificate is based on the name of the certificate.
- c. As during test phase, the DTC launches the browser and enter the url <https://debi.crco.eurocontrol.int>, the connection will take place on port 443 on CRCO web server. The server certificate will be exchanged on port 80.
- d. As during test phase, but now based on the production certificate, the web server will automatically identified the DTC and ask for a password for the connection. To avoid confusion between production and test environements, the CRCO recommend you to delete your test certificate from your browser. (see Annex E. about certificate installation and deletion).
- e. You are now connected to the production environment.

The files exchanged in case of production certificate **will be processed** and validated by the main system.

## **5. Description of security processes**

The DEBI security system is based on 3 levels:

- a. Secure Socket Layer (SSL 3)** – The Server certificate is automatically exchanged between server and client. This is a guarantee for the DTC that they are connected to the CRCO web server. This server certificate is also used as standard security technology for a link between a web server and a client (encrypted, private and integral).
- b. Client certificate (x509)**: The DTC must have a client certificate installed. This certificate, received from the CRCO, is a guarantee for the CRCO that the connected user is known by the system. This client certificate contains detailed information to identify the user who wants to connect.
- c. Transmission password**: Transmission security is ensured by a password (HTPPS and WebDAV). The password can be changed by the DTC.

### **How security works**

When the DTC request a secured web page (https://), the browser and the CRCO server goes through a series of requests and acknowledgements, which take place automatically. Here is an outline of what happens:

- The DTC types the URL for the DEBI application in the browser window.
- The CRCO server responds by sending his certificate.
- The browser checks the CRCO server certificate information for validity.
- The browser then creates a session key, which is encrypted with the CRCO server's public key, and sends it to the CRCO server.
- The CRCO server then decrypts this information using it's private key. Both the browser and CRCO server are now using the same secret session key and all the information transferred is encrypted.
- The CRCO server requests the client certificate to identify the DTC.
- The browser sends the client certificate to the CRCO server.
- The CRCO server checks the validity of the client certificate.
- The connexion is established and the DTC browser receives the first window.

When the browser and CRCO server are using the same secret session key, the little lock icon will appear on the browser window.

## **ANNEX K. Automated option: detailed functions**

In the DEBI application – option automated- , the URL (Uniform Resource Locator) to be used

- for production purpose is [https://debi.crco.eurocontrol.int/<dtc\\_code>](https://debi.crco.eurocontrol.int/<dtc_code>). For example : <https://debi.eurocontrol.int/LF> for DTC France.
- for test purpose is [https://debi.crco.eurocontrol.int/<dtc\\_code\\_test>](https://debi.crco.eurocontrol.int/<dtc_code_test>) . For example : [https://debi.eurocontrol.int/LF\\_test](https://debi.eurocontrol.int/LF_test) for DTC France.

### **1. The DTC Environment**

The DTC needs an Internet Provider and a WebDAV software tool. The DTC needs to develop an application or integrate this function of exchanged files in one of their application. This development is necessary if the DTC wants to take the real benefit of a full-automated solution.

### **2. Principles**

The name "WebDAV" stands for "Web-based Distributed Authoring and Versioning." WebDAV works transparently with existing Web content by extending HTTP. It is a set of extensions to the HTTP protocol, which allows users to read or copy files on remote web servers. WebDAV adds new functionality within the HTTP framework in a way that interacts seamlessly with existing HTTP clients and servers and existing Web content.

This protocol is operating system independent (windows, Unix, Solaris, Linux,...). Broad ranges of open-sources as well as commercial products are available. A complete and up-to-date list of software's can be found at <http://www.webdav.org/projects/>

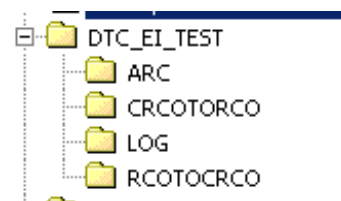
This protocol has several advantages:

- It is an internet based solution
- It is an accepted standard
- It allows a full computerized solution without any human intervention
- It is operating system independent
- Server and clients certificates from browser option will be (re) used
- All data and commands are encrypted
- Port(s) usage on DTC and CRCO is predefined and allows parameterisation of firewall and proxy.
- There are several WebDAV software's in various languages

### **3. Processus to exchange files between CRCO and DTC**

After connection to the WebDAV folder, you will have 4 folders at your disposal with full access:

- ARC : for archived files
- CRCOTORCO : for COR and CLA request files
- RCOTOCRCO: for Messages and CLA replies files
- LOG : for logging activity



In order to implement the automated file transfer with WebDAV on our CRCO server, the DTC has to strictly comply to the following rules :

○ **For files send from DTC to CRCO (put)**

- Copy the *.TXT* file(s) - messages or CLA reply file(s) - in RCOTOCRCO folder. The filename convention must be strictly respected (see chapter 6)
- Copy the *.FLG* files (flag files) with the same name as the *.txt* file. This *.FLG* file(s) can be empty but they are necessary to be sure that *.TXT* is present and complete before a CRCO automated process start. The same process is used in browser option. After upload on CRCO mainframe, this CRCO automated process will rename the *.TXT* file to an *.OLD* file and delete the associated FLG file.

○ **For files retrieved by DTC from CRCO (get)**

- List all filenames in CRCOTORCO remote folder
- Download the files (CLA request and COR Request) from CRCOTORCO folder. The files are with the naming convention described in chapter 6.
- Move and rename the files from CRCOTORCO remote folder to your archive remote folder called ARC. ex: R-EI-20040425-102525-000.txt in CRCOTORCO become ARC-R-EI-2004040425-102525-000.txt in ARC folder. The CRCO recommends this 'rename' operation to avoid downloading again these files during next connexion. Another solution could be the deletion of these files but the DTC will lose the possibility to download this file again in case of problem.

**4. Request for a test using DEBI – option automated -**

a. The DTC requests to [debi.contacts@eurocontrol.int](mailto:debi.contacts@eurocontrol.int) to used DEBI – option automated. The CRCO will send back documentation, a test client certificate, a password for the installation of the certificate and a user and password for the connection.

b. The DTC installs test client certificate depending of the WebDAV software. The test client certificate is the same as browser option but the CRCO will send various types of formats (*.cer*, *.crt*, *.key*, *.pem* and *.pfx*). This variety of format will allow the DTC to include the certificate in any type of software. This certificate is issued by Eurocontrol CRCO as Certification Authority and has a validity of one year. One month before expiration, CRCO will send you a new certificate.

c. The DTC executes his WebDAV software tool with the url [https://debi.crco.eurocontrol.int/dtc\\_code\\_test](https://debi.crco.eurocontrol.int/dtc_code_test), the connection will take place on port 443 – default https port – on CRCO web server. The server certificate will be exchanged on port 80. If you have a firewall or/and a proxy, this information should probably be entered.

d. After authentication of the test certificate, the web server will ask for a user and password for the connection. The user to be used in test environment is DTC\_dtc\_code\_TEST like DTC\_LF\_TEST.

e. When the user and password is entered, you are now able to exchange the files.

The files exchanged with test user will not be processed and validated by the CRCO main system. If you want a validation of the content, you have to contact [debi.contacts@eurocontrol.int](mailto:debi.contacts@eurocontrol.int) or your usual CRCO R3B contact.

**5. Request to move to DEBi production – option automated –**



- a.** The DTC requests to `debi.contacts@eurocontrol.int` to move to DEBI production option automated at a fixed date. The CRCO will send back production client certificate, a password for the installation of the certificate and a user and password for the connection.
- b.** The DTC installs the production client certificate. The difference between test and production certificate is based on the name of the certificate.
- c.** As during test phase, the DTC executes his WebDAV software tool making a link to url [https://debi.crco.eurocontrol.int/dtc\\_code](https://debi.crco.eurocontrol.int/dtc_code), the connection will take place on port 443 on CRCO web server. The server certificate will be exchanged on port 80.
- d.** After authentication of the production certificate, the web server will ask for a user and password for the connection. The user to be used in production environment is `DTC_dtc_code` like `DTC_LF`.
- e.** You are now connected to the production environment; you are now able to exchange the files.

The files exchanged using production user will be processed and validated by the main system.